

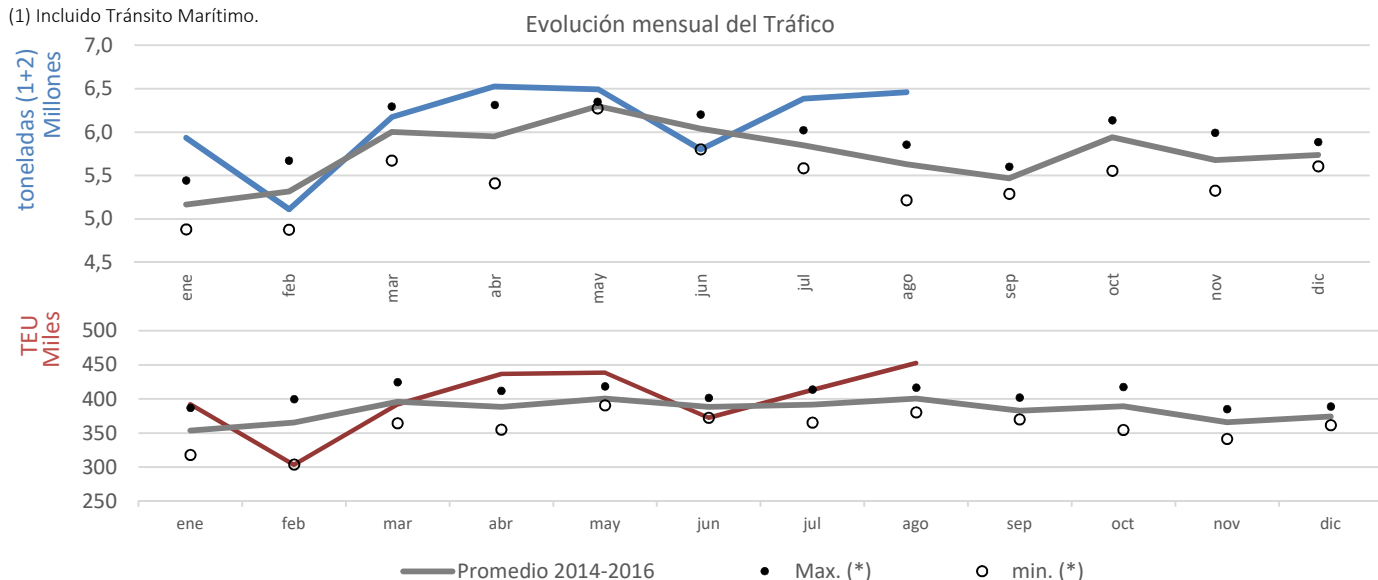


MAGNITUDES BÁSICAS DE TRÁFICO APV. Datos definitivos acumulados.

agosto de 2017

	2016	2017	Dif. 17/16	Δ 17/16 acum. mes	Δ 17/16 acum. mes ant.	Evolución Δ 17/16
TOTAL TRÁFICO (t) (1+2) ⁽¹⁾	47.389.031	48.875.355	1.486.324	3,14%	2,04%	
<i>(Toneladas)</i>						
1. TOTAL GRANEL	4.223.784	3.710.355	-513.429	-12,16%	-14,98%	
<i>Líquido</i>	2.424.832	2.295.650	-129.182	-5,33%	-10,52%	
<i>Sólido</i>	1.798.952	1.414.705	-384.247	-21,36%	-20,94%	
2. TOTAL MERC. GRAL.	43.165.247	45.165.000	1.999.753	4,63%	3,74%	
<i>No containerizada</i>	7.338.842	7.536.943	198.101	2,70%	1,70%	
<i>Containerizada</i>	35.826.405	37.628.057	1.801.652	5,03%	4,18%	
BUQUES.: NÚMERO	5.123	5.104	-19	-0,37%	-3,72%	
G.T.	168.656.378	165.970.875	-2.685.503	-1,59%	-1,96%	
ESTRUCTURA DEL TRÁFICO (t)	47.389.031	48.875.355	1.486.324	3,14%	2,04%	
<i>Carga / Descarga</i>	25.819.219	26.083.142	263.923	1,02%	-0,54%	
<i>Carga</i>	14.402.330	14.707.921	305.591	2,12%	1,43%	
<i>Descarga</i>	11.416.889	11.375.221	-41.668	-0,36%	-3,02%	
<i>Tránsito Marítimo</i>	21.569.812	22.792.213	1.222.401	5,67%	5,22%	
CONTENEDORES (TEU)	3.155.406	3.200.935	45.529	1,44%	0,34%	
<i>Llenos</i>	2.382.746	2.536.168	153.422	6,44%	4,81%	
<i>Carga</i>	565.538	610.269	44.731	7,91%	6,50%	
<i>Descarga</i>	417.818	439.881	22.063	5,28%	3,29%	
<i>Tránsito</i>	1.399.390	1.486.018	86.628	6,19%	4,56%	
<i>Vacios</i>	772.660	664.767	-107.893	-13,96%	-13,64%	
PASAJEROS LÍNEA REGULAR Y CRUCEROS						
<i>Total pasajeros</i>	559.749	678.190	118.441	21,16%	21,47%	
<i>Línea regular</i>	342.332	447.830	105.498	30,82%	33,58%	
<i>Cruceros</i>	217.417	230.360	12.943	5,95%	3,66%	

(1) Includo Tránsito Marítimo.



(*) Últimos 3 ejercicios (2014-2016).



MAGNITUDES BÁSICAS DE TRÁFICO APV. Datos definitivos interanuales.

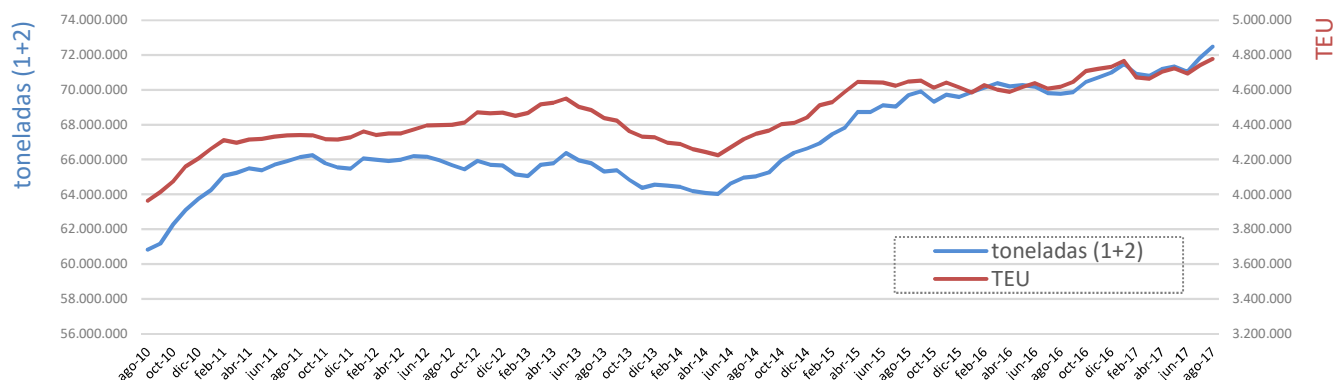
agosto de 2017

	sep-15 ago-16	sep-16 ago-17	Variación	Tend. Anual	Tend. Anual mes ant.	Evolución tendencia anual (2)
TOTAL TRÁFICO (t) (1+2) ⁽¹⁾	69.781.954	72.481.865	2.699.911	3,87%	2,90%	
<i>(Toneladas)</i>						
1. TOTAL GRANEL	6.311.737	5.821.216	-490.521	-7,77%	-12,01%	
<i>Líquido</i>	3.472.097	3.673.886	201.789	5,81%	-3,77%	
<i>Sólido</i>	2.839.640	2.147.330	-692.310	-24,38%	-22,78%	
2. TOTAL MERC. GRAL.	63.470.217	66.660.649	3.190.432	5,03%	4,45%	
<i>No containerizada</i>	10.797.013	10.986.538	189.525	1,76%	-0,05%	
<i>Containerizada</i>	52.673.204	55.674.111	3.000.907	5,70%	5,39%	
BUQUES.: NÚMERO	7.723	7.683	-40	-0,52%	-2,12%	
G.T.	251.673.450	253.202.280	1.528.830	0,61%	0,89%	
ESTRUCTURA DEL TRÁFICO (t)	69.781.954	72.481.865	2.699.911	3,87%	2,90%	
<i>Carga / Descarga</i>	38.066.362	38.680.940	614.578	1,61%	-0,16%	
<i>Carga</i>	21.230.016	21.613.661	383.645	1,81%	0,36%	
<i>Descarga</i>	16.836.346	17.067.279	230.933	1,37%	-0,83%	
<i>Tránsito Marítimo</i>	31.715.592	33.800.925	2.085.333	6,58%	6,64%	
CONTENEDORES (TEU)	4.619.085	4.777.665	158.580	3,43%	2,91%	
<i>Llenos</i>	3.499.731	3.730.250	230.519	6,59%	5,52%	
<i>Carga</i>	839.059	899.433	60.374	7,20%	5,75%	
<i>Descarga</i>	610.350	640.252	29.902	4,90%	4,47%	
<i>Tránsito</i>	2.050.322	2.190.565	140.243	6,84%	5,74%	
<i>Vacíos</i>	1.119.354	1.047.415	-71.939	-6,43%	-5,17%	
PASAJEROS LÍNEA REGULAR Y CRUCEROS						
<i>Total pasajeros</i>	821.634	1.028.641	207.007	25,19%	24,74%	
<i>Línea regular</i>	448.067	612.434	164.367	36,68%	36,90%	
<i>Cruceros</i>	373.567	416.207	42.640	11,41%	10,50%	

⁽¹⁾ Includo Tránsito Marítimo.

⁽²⁾ Evolución del índice de tendencia anual de los tres últimos meses (de izquierda a derecha).

Evolución del Tráfico Total (TAM-Total Anual Móvil)





MAGNITUDES BÁSICAS DE TRÁFICO APV. Datos definitivos mensuales.

agosto de 2017

	VALENCIA			GANDÍA			SAGUNTO			APV		
	Ago-16	Ago-17	Δ17/16	Ago-16	Ago-17	Δ17/16	Ago-16	Ago-17	Δ17/16	Ago-16	Ago-17	Δ17/16
TOTAL TRÁFICO (t) (1+2) ⁽¹⁾	5.316.428	5.979.335	12,47%	25.364	35.780	41,07%	478.495	443.107	-7,40%	5.820.287	6.458.222	10,96%
<i>(Toneladas)</i>												
1. TOTAL GRANEL	159.546	275.931	72,95%	0	0		287.953	223.798	-22,28%	447.499	499.729	11,67%
<i>Líquido</i>	96.042	179.461	86,86%	0	0		168.895	183.521	8,66%	264.937	362.982	37,01%
<i>Sólido</i>	63.504	96.470	51,91%	0	0		119.058	40.277	-66,17%	182.562	136.747	-25,10%
2. TOTAL MERC. GRAL.	5.156.882	5.703.404	10,60%	25.364	35.780	41,07%	190.542	219.309	15,10%	5.372.788	5.958.493	10,90%
<i>No containerizada</i>	530.482	552.586	4,17%	25.364	35.780	41,07%	128.057	180.761	41,16%	683.903	769.127	12,46%
<i>Containerizada</i>	4.626.400	5.150.818	11,34%	0	0		62.485	38.548	-38,31%	4.688.885	5.189.366	10,67%
BUQUES.: NÚMERO	519	537	3,47%	12	56	366,67%	91	98	7,69%	622	691	11,09%
G.T.	19.668.024	19.710.899	0,22%	46.107	266.473	477,94%	1.795.544	1.591.329	-11,37%	21.509.675	21.568.701	0,27%
ESTRUCTURA DEL TRÁFICO (t)	5.316.428	5.979.335	12,47%	25.364	35.780	41,07%	478.495	443.107	-7,40%	5.820.287	6.458.222	10,96%
<i>Carga / Descarga</i>	2.384.807	2.798.507	17,35%	25.364	35.780	41,07%	476.559	441.190	-7,42%	2.886.730	3.275.477	13,47%
<i>Carga</i>	1.446.668	1.646.108	13,79%	8.153	10.456	28,25%	183.010	104.238	-43,04%	1.637.831	1.760.802	7,51%
<i>Descarga</i>	938.139	1.152.399	22,84%	17.211	25.324	47,14%	293.549	336.952	14,79%	1.248.899	1.514.675	21,28%
<i>Tránsito Marítimo</i>	2.931.621	3.180.828	8,50%	0	0		1.936	1.917	-0,98%	2.933.557	3.182.745	8,49%
CONTENEDORES (TEU)	409.679	448.414	9,45%	0	0		6.757	4.228	-37,43%	416.436	452.642	8,69%
<i>Llenos</i>	302.404	357.561	18,24%	0	0		4.288	2.796	-34,79%	306.692	360.357	17,50%
<i>Carga</i>	65.891	79.369	20,45%	0	0		2.822	1.801	-36,18%	68.713	81.170	18,13%
<i>Descarga</i>	54.523	65.173	19,53%	0	0		1.414	910	-35,64%	55.937	66.083	18,14%
<i>Tránsito</i>	181.990	213.019	17,05%	0	0		52	85	63,46%	182.042	213.104	17,06%
<i>Vacíos</i>	107.275	90.853	-15,31%	0	0		2.469	1.432	-42,00%	109.744	92.285	-15,91%
PASAJEROS LÍNEA REGULAR Y CRUCEROS												
<i>Total pasajeros</i>	120.863	130.703	8,14%	0	14.372		0	0		120.863	145.075	20,03%
<i>Línea regular</i>	81.064	84.455	4,18%	0	14.372		0	0		81.064	98.827	21,91%
<i>Cruceros</i>	39.799	46.248	16,20%	0	0		0	0		39.799	46.248	16,20%

⁽¹⁾ Incluido Tránsito Marítimo.



MAGNITUDES BÁSICAS DE TRÁFICO APV. Datos definitivos acumulados.

agosto de 2017

	VALENCIA			GANDÍA			SAGUNTO			APV		
	2016	2017	Δ17/16 acum.	2016	2017	Δ17/16 acum.	2016	2017	Δ17/16 acum.	2016	2017	Δ17/16 acum.
TOTAL TRÁFICO (t) (1+2) ⁽¹⁾	42.859.459	44.625.407	4,12%	254.773	240.972	-5,42%	4.274.799	4.008.976	-6,22%	47.389.031	48.875.355	3,14%
<i>(Toneladas)</i>												
1. TOTAL GRANEL	1.794.467	1.850.531	3,12%	0	27		2.429.317	1.859.797	-23,44%	4.223.784	3.710.355	-12,16%
<i>Líquido</i>	852.809	947.937	11,15%	0	27		1.572.023	1.347.686	-14,27%	2.424.832	2.295.650	-5,33%
<i>Sólido</i>	941.658	902.594	-4,15%	0	0		857.294	512.111	-40,26%	1.798.952	1.414.705	-21,36%
2. TOTAL MERC. GRAL.	41.064.992	42.774.876	4,16%	254.773	240.945	-5,43%	1.845.482	2.149.179	16,46%	43.165.247	45.165.000	4,63%
<i>No containerizada</i>	5.600.316	5.469.481	-2,34%	249.913	240.930	-3,59%	1.488.613	1.826.532	22,70%	7.338.842	7.536.943	2,70%
<i>Containerizada</i>	35.464.676	37.305.395	5,19%	4.860	15	-99,69%	356.869	322.647	-9,59%	35.826.405	37.628.057	5,03%
BUQUES: NÚMERO	4.132	4.067	-1,57%	113	186	64,60%	878	851	-3,08%	5.123	5.104	-0,37%
G.T.	152.315.476	149.917.541	-1,57%	668.613	946.957	41,63%	15.672.289	15.106.377	-3,61%	168.656.378	165.970.875	-1,59%
ESTRUCTURA DEL TRÁFICO (t)	42.859.459	44.625.407	4,12%	254.773	240.972	-5,42%	4.274.799	4.008.976	-6,22%	47.389.031	48.875.355	3,14%
<i>Carga / Descarga</i>	21.308.027	21.845.936	2,52%	254.773	240.972	-5,42%	4.256.419	3.996.234	-6,11%	25.819.219	26.083.142	1,02%
<i>Carga</i>	12.819.148	13.426.698	4,74%	85.920	103.898	20,92%	1.497.262	1.177.325	-21,37%	14.402.330	14.707.921	2,12%
<i>Descarga</i>	8.488.879	8.419.238	-0,82%	168.853	137.074	-18,82%	2.759.157	2.818.909	2,17%	11.416.889	11.375.221	-0,36%
<i>Tránsito Marítimo</i>	21.551.432	22.779.471	5,70%	0	0		18.380	12.742	-30,67%	21.569.812	22.792.213	5,67%
CONTENEDORES (TEU)	3.116.362	3.165.851	1,59%	412	6	-98,54%	38.632	35.078	-9,20%	3.155.406	3.200.935	1,44%
<i>Llenos</i>	2.358.118	2.513.198	6,58%	380	0	-100,00%	24.248	22.970	-5,27%	2.382.746	2.536.168	6,44%
<i>Carga</i>	547.010	594.597	8,70%	380	0	-100,00%	18.148	15.672	-13,64%	565.538	610.269	7,91%
<i>Descarga</i>	411.985	432.757	5,04%	0	0		5.833	7.124	22,13%	417.818	439.881	5,28%
<i>Tránsito</i>	1.399.123	1.485.844	6,20%	0	0		267	174	-34,83%	1.399.390	1.486.018	6,19%
<i>Vacíos</i>	758.244	652.653	-13,93%	32	6	-81,25%	14.384	12.108	-15,82%	772.660	664.767	-13,96%
PASAJEROS LÍNEA REGULAR Y CRUCEROS												
<i>Total pasajeros</i>	559.749	651.001	16,30%	0	27.187		0	2		559.749	678.190	21,16%
<i>Línea regular</i>	342.332	420.641	22,88%	0	27.187		0	2		342.332	447.830	30,82%
<i>Cruceros</i>	217.417	230.360	5,95%	0	0		0	0		217.417	230.360	5,95%

⁽¹⁾ Includido Tránsito Marítimo.



MAGNITUDES BÁSICAS DE TRÁFICO APV. Datos definitivos interanuales.

agosto de 2017

	VALENCIA			GANDÍA			SAGUNTO			APV		
	sep-15 ago-16	sep-16 ago-17	Tend. Anual	sep-15 ago-16	sep-16 ago-17	Tend. Anual	sep-15 ago-16	sep-16 ago-17	Tend. Anual	sep-15 ago-16	sep-16 ago-17	Tend. Anual
TOTAL TRÁFICO (t) (1+2) ⁽¹⁾	63.275.558	65.835.285	4,05%	353.189	336.401	-4,75%	6.153.207	6.310.179	2,55%	69.781.954	72.481.865	3,87%
<i>(Toneladas)</i>												
1. TOTAL GRANEL	2.855.662	2.695.818	-5,60%	701	27	-96,15%	3.455.374	3.125.371	-9,55%	6.311.737	5.821.216	-7,77%
<i>Líquido</i>	1.234.960	1.345.991	8,99%	0	27		2.237.137	2.327.868	4,06%	3.472.097	3.673.886	5,81%
<i>Sólido</i>	1.620.702	1.349.827	-16,71%	701	0	-100,00%	1.218.237	797.503	-34,54%	2.839.640	2.147.330	-24,38%
2. TOTAL MERC. GRAL.	60.419.896	63.139.467	4,50%	352.488	336.374	-4,57%	2.697.833	3.184.808	18,05%	63.470.217	66.660.649	5,03%
<i>No containerizada</i>	8.216.225	7.983.202	-2,84%	345.900	336.359	-2,76%	2.234.888	2.666.977	19,33%	10.797.013	10.986.538	1,76%
<i>Containerizada</i>	52.203.671	55.156.265	5,66%	6.588	15	-99,77%	462.945	517.831	11,86%	52.673.204	55.674.111	5,70%
BUQUES.: NÚMERO	6.260	6.167	-1,49%	154	223	44,81%	1.309	1.293	-1,22%	7.723	7.683	-0,52%
G.T.	228.044.129	228.409.694	0,16%	924.244	1.153.983	24,86%	22.705.077	23.638.603	4,11%	251.673.450	253.202.280	0,61%
ESTRUCTURA DEL TRÁFICO (t)	63.275.558	65.835.285	4,05%	353.189	336.401	-4,75%	6.153.207	6.310.179	2,55%	69.781.954	72.481.865	3,87%
<i>Carga / Descarga</i>	31.583.424	32.055.159	1,49%	353.189	336.401	-4,75%	6.129.749	6.289.380	2,60%	38.066.362	38.680.940	1,61%
<i>Carga</i>	18.962.920	19.699.916	3,89%	118.043	124.947	5,85%	2.149.053	1.788.798	-16,76%	21.230.016	21.613.661	1,81%
<i>Descarga</i>	12.620.504	12.355.243	-2,10%	235.146	211.454	-10,08%	3.980.696	4.500.582	13,06%	16.836.346	17.067.279	1,37%
<i>Tránsito Marítimo</i>	31.692.134	33.780.126	6,59%	0	0		23.458	20.799	-11,34%	31.715.592	33.800.925	6,58%
CONTENEDORES (TEU)	4.567.506	4.720.299	3,35%	538	6	-98,88%	51.041	57.360	12,38%	4.619.085	4.777.665	3,43%
<i>Llenos</i>	3.467.763	3.693.715	6,52%	506	0	-100,00%	31.462	36.535	16,12%	3.499.731	3.730.250	6,59%
<i>Carga</i>	814.581	874.097	7,31%	506	0	-100,00%	23.972	25.336	5,69%	839.059	899.433	7,20%
<i>Descarga</i>	603.139	629.251	4,33%	0	0		7.211	11.001	52,56%	610.350	640.252	4,90%
<i>Tránsito</i>	2.050.043	2.190.367	6,84%	0	0		279	198	-29,03%	2.050.322	2.190.565	6,84%
<i>Vacíos</i>	1.099.743	1.026.584	-6,65%	32	6	-81,25%	19.579	20.825	6,36%	1.119.354	1.047.415	-6,43%
PASAJEROS LÍNEA REGULAR Y CRUCEROS												
<i>Total pasajeros</i>	821.634	1.001.452	21,89%	0	27.187		0	2		821.634	1.028.641	25,19%
<i>Línea regular</i>	448.067	585.245	30,62%	0	27.187		0	2		448.067	612.434	36,68%
<i>Cruceros</i>	373.567	416.207	11,41%	0	0		0	0		373.567	416.207	11,41%

⁽¹⁾ Incluido Tránsito Marítimo.