

Statistical Report
Port Authority of Valencia
February 2024

VALENCIA

SAGUNTO



A map of the Valencian Community, with the coastal region highlighted in green. Three locations are marked with white dots and labeled: VALENCIA, SAGUNTO, and GANDIA. SAGUNTO and GANDIA are located to the east of VALENCIA.

GANDIA

INDEX

1. MAIN FIGURES	3
2. COMMENTS ON TRAFFIC ANALYSIS	5
3. PORT AUTHORITY OF VALENCIA	
3.1 Main figures	6
3.2 Classification of goods by types	7
4. CLASIFICACION OF GOODS BY TYPE AND PACKAGING. PORT AUTHORITY OF VALENCIA	
4.1 Liquid Bulk	8
4.2 Solid Bulk	9
4.3 Convencional General Cargo	10
4.4 Containerised General Cargo	11
5. CONTAINER TRAFFIC	12
6. RORO TRAFIC	13
7. PASSENGER TRAFIC	13
8. VESSELS TRAFIC	14
9. LAND TRAFIC	14
10. TRAFIC BY ORIGIN / DESTINATION	
10.1 Traffic by Geographical Areas (tonnes).....	15
10.2 Traffic by Geographical Areas (TEU).....	16
10.3 Traffic by Countries (tonnes).....	17
10.4 Traffic by Countries (TEU).....	18
11. TRAFIC BY PORTS	
11.1 Port of Valencia	
11.1.1 Main figures	19
11.1.2 Classification of goods by types	20
11.2. Port of Sagunto	
11.2.1 Main figures	21
11.2.2 Classification of goods by types	22
11.3. Port of Gandía	
11.3.1 Main figures	23
11.3.2 Classification of goods by types	24

Annex I: Traffic transshipment Port Authority of Valencia

Annex II: Traffic transshipment Port of Valencia

Annex III: Traffic transshipment Port of Sagunto

Annex IV: Traffic transshipment Port of Gandía

1. MAIN FIGURES

	2023	2024	Δ24/23 Feb. accum	Δ24/23 Jan. accum	Annual trend
PORT AUTHORITY OF VALENCIA					
Total traffic (t)	11.553.960	12.294.308	6,41%	6,52%	0,71%
Liquid Bulk	836.975	692.128	-17,31%	-33,89%	-10,64%
Solid Bulk	304.763	538.431	76,67%	28,20%	20,53%
Convencional General Cargo	2.386.726	2.444.555	2,42%	2,13%	3,40%
Containerised General Cargo	7.953.904	8.533.700	7,29%	12,11%	0,32%
Fishing	129	404	212,32%	393,66%	27,59%
Supplies	71.463	85.090	19,07%	3,29%	5,81%
Vessels Number	1.213	1.145	-5,61%	-5,50%	-0,90%
GT	47.416.588	42.411.538	-10,56%	-12,58%	0,46%
Containers (TEU)	713.039	784.095	9,97%	12,73%	-0,25%
Passengers (units)	97.198	128.070	31,76%	44,55%	16,18%
Regular Lines	80.081	89.394	11,63%	9,14%	5,43%
Cruise	17.117	38.676	125,95%	356,33%	29,06%
Vehicles (units)	102.297	88.604	-13,39%	3,38%	3,07%
RoRo Traffic (t)	2.100.587	2.155.973	2,64%	1,04%	2,00%
UTI	71.038	79.334	11,68%	6,65%	3,06%
Rail Traffic (t)	543.578	521.395	-4,08%	0,71%	-0,35%
TEU	36.477	37.466	2,71%	4,22%	-0,16%
Vehicles	6.187	7.608	22,97%	49,24%	134,36%

1. MAIN FIGURES

	2023	2024	Δ24/23 Feb. accum	Δ24/23 Jan. accum	Annual trend
PORT OF VALENCIA					
Total traffic (t)	10.224.578	10.831.839	5,94%	7,31%	1,12%
Liquid Bulk	307.691	167.325	-45,62%	-54,40%	-7,49%
Solid Bulk	228.463	315.968	38,30%	-25,20%	22,50%
Convencional General Cargo	1.747.299	1.814.236	3,83%	2,10%	3,06%
Containerised General Cargo	7.874.474	8.453.705	7,36%	12,24%	0,34%
Fishing	50	50	0,00%	0,00%	-2,39%
Supplies	66.601	80.555	20,95%	2,30%	5,63%
Vessels Number	998	922	-7,62%	-5,79%	-1,05%
GT	41.720.342	38.100.661	-8,68%	-8,40%	0,82%
Containers (TEU)	703.300	775.296	10,24%	13,15%	-0,22%
Passengers (units)	97.198	128.070	31,76%	44,55%	16,18%
Regular Lines	80.081	89.394	11,63%	9,14%	5,43%
Cruise	17.117	38.676	125,95%	356,33%	29,06%
Vehicles (units)	81.980	61.452	-25,04%	-12,05%	-6,59%
RoRo Traffic (t)	1.824.074	1.893.812	3,82%	1,62%	2,27%
UTI	61.754	71.570	15,90%	10,59%	3,42%
Rail Traffic (t)	390.130	338.570	-13,22%	-9,54%	-5,77%
TEU	36.477	37.466	2,71%	4,22%	-0,16%
Vehicles	6.187	7.608	22,97%	49,24%	134,36%
PORT OF SAGUNTO					
Total traffic (t)	1.292.313	1.441.397	11,54%	2,45%	-1,54%
Liquid Bulk	529.284	524.803	-0,85%	-24,57%	-11,74%
Solid Bulk	76.300	222.463	191,56%	200,09%	16,62%
Convencional General Cargo	603.033	609.860	1,13%	4,78%	6,49%
Containerised General Cargo	79.430	79.995	0,71%	-0,81%	-1,35%
Fishing	4	0			-88,57%
Supplies	4.262	4.276	0,33%	26,06%	12,26%
Vessels Number	202	217	7,43%	-0,89%	1,96%
GT	5.617.017	4.240.450	-24,51%	-40,93%	-2,45%
Containers (TEU)	9.739	8.799	-9,65%	-15,87%	-2,58%
Passengers (units)	0	0			
Regular Lines	0	0			
Cruise					
Vehicles (units)	20.317	27.152	33,64%	62,95%	42,57%
RoRo Traffic (t)	276.513	262.161	-5,19%	-2,41%	0,00%
UTI	9.284	7.764	-16,37%	-17,65%	-0,13%
Rail Traffic (t)	153.448	182.825	19,14%	22,72%	14,09%
TEU	0	0			
Vehicles	0	0			
PORT OF GANDIA					
Total traffic (t)	37.070	21.072	-43,15%	-47,02%	-27,77%
Liquid Bulk					-1,85%
Solid Bulk					-28,38%
Convencional General Cargo	36.394	20.459	-43,78%	-48,43%	
Containerised General Cargo					
Fishing	76	354	367,78%	797,10%	48,67%
Supplies	600	259	-56,83%	-25,71%	-35,48%
Vessels Number	13	6	-53,85%	-57,14%	-34,57%
GT	79.229	70.427	-11,11%	-8,48%	-13,80%
Containers (TEU)	0	0			
Passengers (units)	0	0			
Regular Lines	0	0			
Cruise					
Vehicles (units)	0	0			
RoRo Traffic (t)					
UTI					

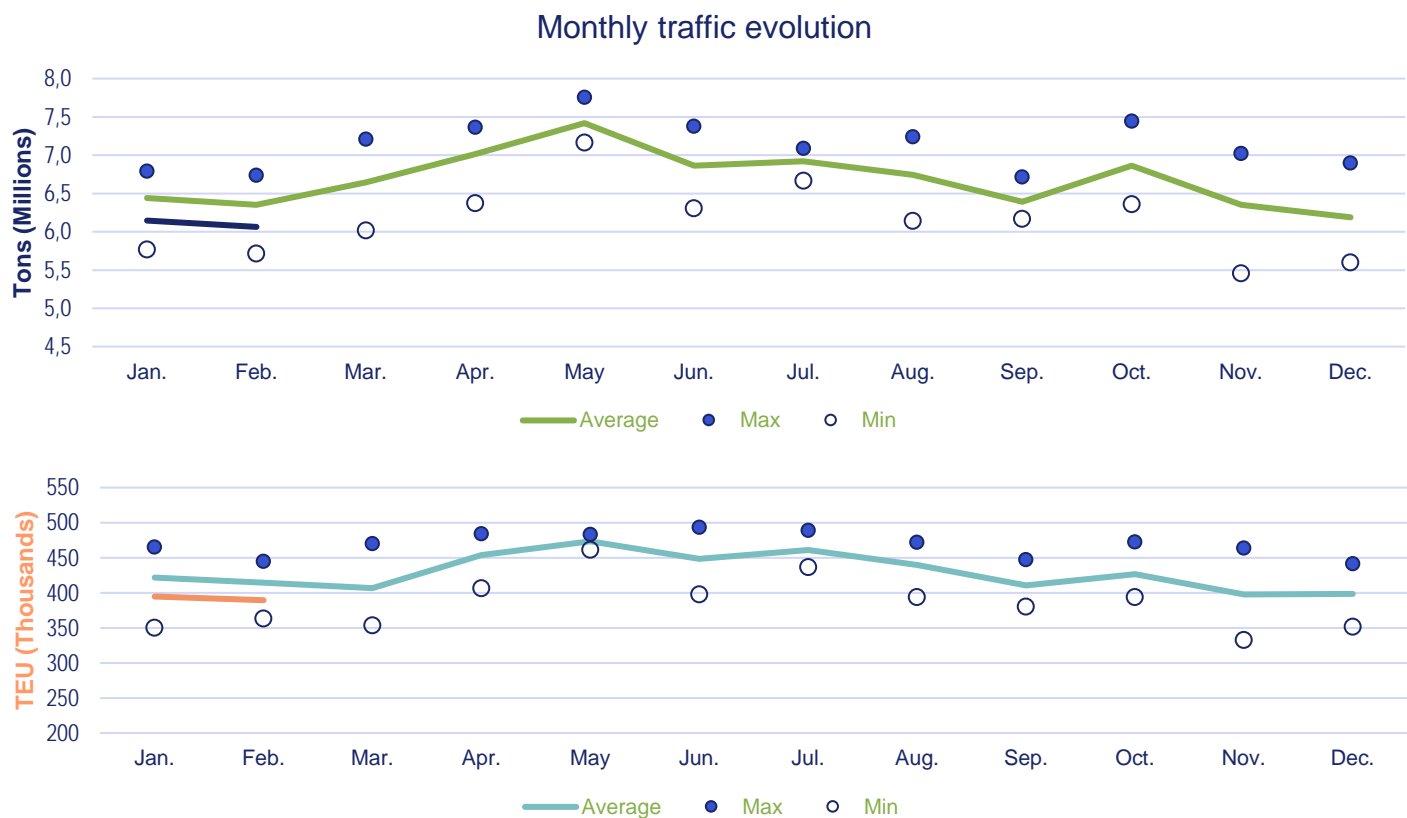
2. COMMENTS ON TRAFFIC ANALYSIS

	Monthly	Δ24/23	Accumulated	Δ24/23	Interannual	Δ24/23
Tons	6.063.103	6,11% ▲	12.208.814	6,33% ▲	77.472.870	0,68% ▬
TEU	389.430	7,30% ▲	784.095	9,97% ▲	4.868.041	-0,25% ▬
Vehicles	37.695	-28,95% ▼	88.604	-13,39% ▼	629.458	3,07% ▬
Passengers	52.733	16,98% ▲	128.070	31,76% ▲	1.589.052	16,18% ▲

Valenciaport handled 784,095 containers in the first two months of the year, a figure that represents a growth of +9.97% compared to January-February 2023

Calculated by weight, the volume of goods passing through Valencian terminals in the first two months of the year reached 12,208,814 million tonnes (+6.33%)

In 2024 almost all sectors grew: iron and steel (+3.03%), non-metallic minerals (+19.42%), fertilisers (+28.53%), chemicals (+4.42%), agri-foodstuffs (+15.75%), vehicles and transport (+1.79%)



Adding the number of containers that have entered or left the terminals using the railway between January and February, the growth compared to the same period in 2023 is +2.71%

The Valenciaport Statistical Bulletin shows that ro-ro traffic (maritime ro-ro services, trucks, platforms...) increased by +2.64% while UTIs (Intermodal Transport Units) grew by +11.68%

China has been Valenciaport's main trading partner during the first two months of the year with 93,636 containers handled (+29.99%). The countries with the highest growth in commercial movement this year are Saudi Arabia (+97.14%), Egypt (+97.44%) and Greece (+78.91%)

3. PORT AUTHORITY OF VALENCIA

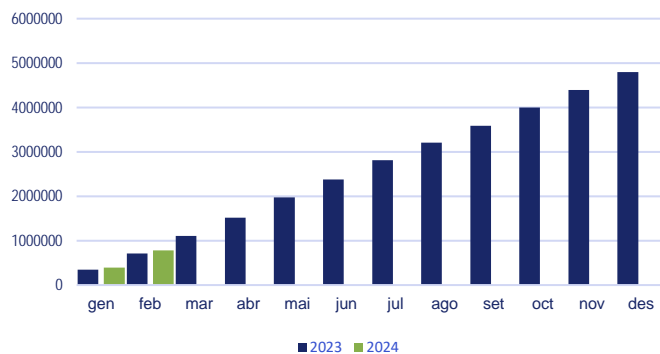
3.1 Main Figures

	2023	2024	Δ24/23 Feb. accum	Δ24/23 Jan. accum	Annual trend
Total traffic (t)	11.553.960	12.294.308	6,41%	6,52%	0,71%
Liquid Bulk	836.975	692.128	-17,31%	-33,89%	-10,64%
Solid Bulk	304.763	538.431	76,67%	28,20%	20,53%
Convencional General Cargo	2.386.726	2.444.555	2,42%	2,13%	3,40%
Containerised General Cargo	7.953.904	8.533.700	7,29%	12,11%	0,32%
Fishing	129	404	212,32%	393,66%	27,59%
Supplies	71.463	85.090	19,07%	3,29%	5,81%
Traffic structure (t)	11.482.368	12.208.814	6,33%	6,54%	0,68%
Loaded/Unloaded	7.043.858	7.190.688	2,08%	-6,01%	-2,93%
Loaded	3.738.521	3.625.193	-3,03%	-12,07%	-5,29%
Unloaded	3.305.337	3.565.495	7,87%	0,54%	-0,38%
Transshipment	4.438.510	5.018.126	13,06%	26,77%	6,65%
Vessels Number	1.213	1.145	-5,61%	-5,50%	-0,90%
GT	47.416.588	42.411.538	-10,56%	-12,58%	0,46%
Containers (TEU)	713.039	784.095	9,97%	12,73%	-0,25%
Full	544.735	583.876	7,19%	11,40%	-1,91%
Loaded	138.727	129.921	-6,35%	-15,92%	-11,80%
Unloaded	118.861	127.214	7,03%	5,96%	-0,30%
Transshipment	287.147	326.741	13,79%	26,14%	2,34%
Empty	168.304	200.219	18,96%	17,13%	5,36%
Passengers (units)	97.198	128.070	31,76%	44,55%	16,18%
Regular Lines	80.081	89.394	11,63%	9,14%	5,43%
Cruise	17.117	38.676	125,95%	356,33%	29,06%
Vehicles (units)	102.297	88.604	-13,39%	3,38%	3,07%

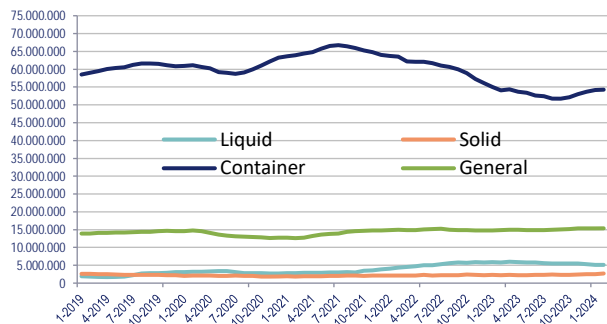
Accumulated Total Traffic (t)



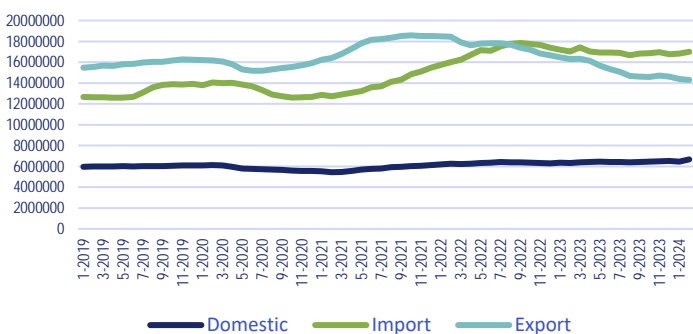
Accumulated Container Traffic (TEU)



Traffic by type of packaging (t) (TAM)*



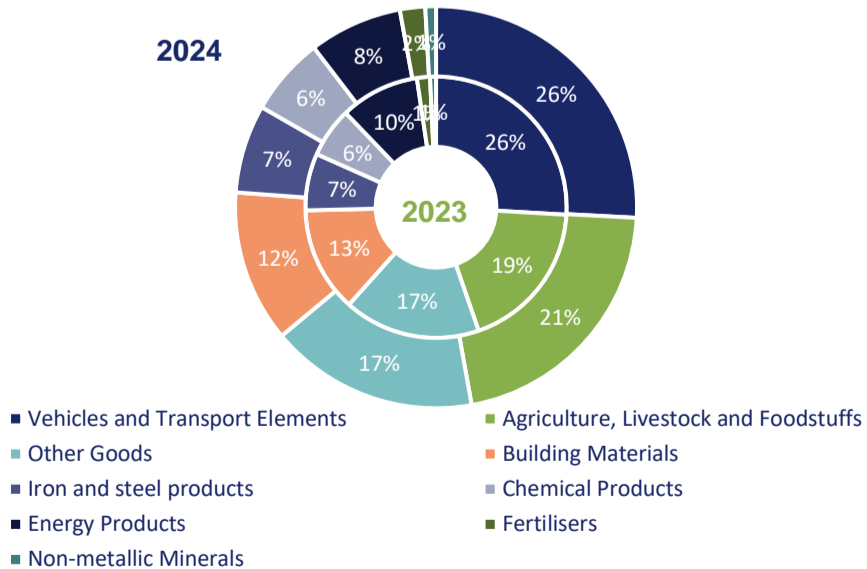
External/Domestic Trade (tonnes without tare general cargo) (TAM)*



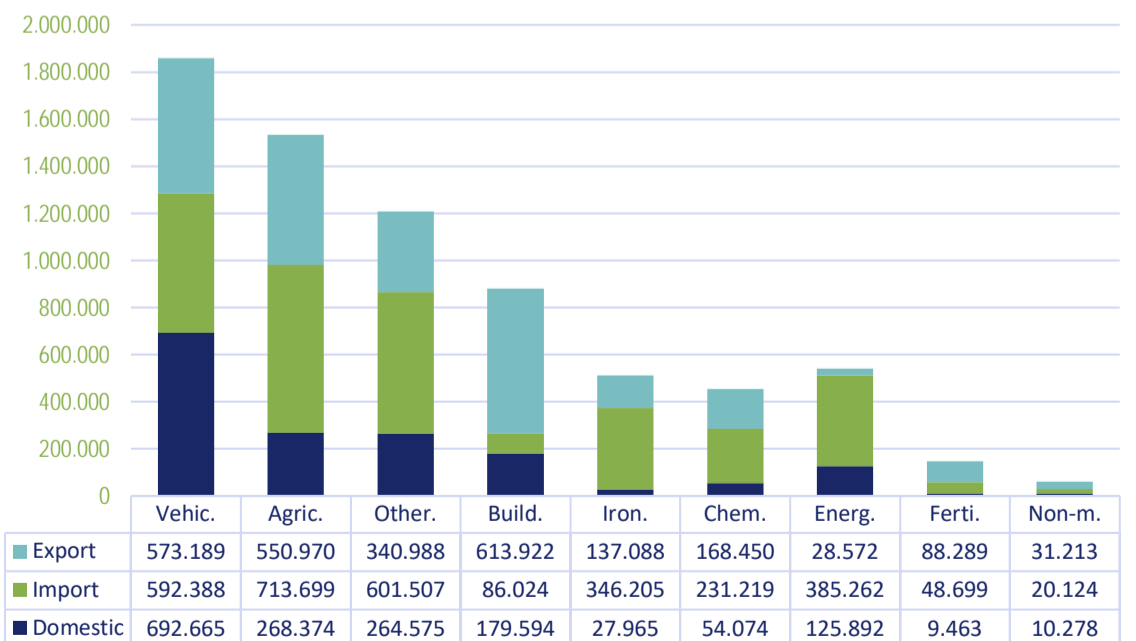
3.2 Classification of goods by types

	2024					Δ24/23 Feb. accum				Δ24/23 Jan. accum
	2023	Export	Import	Domestic	TOTAL	Export	Import	Domestic	TOTAL	accum
1. Energy Products	691.241	28.572	385.262	125.892	539.726	-79,41%	1,48%	-27,16%	-21,92%	-40,34%
Crude oil	20	0	0	0	0					
Fueloil	42.676	4.228	18.834	2.063	25.125	-9,48%	0,84%	-89,33%	-41,13%	-87,23%
Gasoil	66.471	104	0	0	104	38,67%			-99,84%	-99,87%
Petrol	26.001	89	0	12	101			-99,95%	-99,61%	-99,71%
Other oil products	6.173	6.370	1.770	431	8.571	53,09%	-7,76%	363,44%	38,85%	56,46%
Energetic gases of oil	628	0	103	1.454	1.557		368,18%	139,93%	147,93%	88,86%
Coal and petroleum coke	3.386	694	1.785	321	2.800	967,69%	-43,87%	127,66%	-17,31%	31,53%
Natural gas	499.015	1.634	351.724	113.989	467.347	-98,39%	27,28%	-5,83%	-6,35%	-29,03%
Biocombustibles	46.871	15.453	11.046	7.622	34.121	-45,17%	-15,61%	36,23%	-27,20%	-19,88%
10. Iron and steel products	496.211	137.088	346.205	27.965	511.258	1,80%	0,71%	57,35%	3,03%	4,17%
Iron ore	1.339	101	33	225	359		37,50%	-82,89%	-73,19%	-68,86%
Other minerals and metallic residues	35.409	20.993	8.575	2.578	32.146	35,62%	-51,46%	13,87%	-9,22%	-29,69%
Scrap iron	7.229	2.124	1.669	4.978	8.771	72,82%	-40,39%	55,56%	21,33%	8,85%
Iron and steel products	405.566	103.562	310.113	16.102	429.777	4,61%	3,33%	149,57%	5,97%	10,13%
Other metallurgical products	46.668	10.308	25.815	4.082	40.205	-45,65%	11,46%	-10,11%	-13,85%	-20,87%
11. Non-metallic Minerals	51.597	31.213	20.124	10.278	61.615	20,36%	19,38%	16,70%	19,42%	-0,36%
Common salt	4.531	3.849	607	1.188	5.644	8,09%	39,86%	121,64%	24,56%	6,02%
Other not metallic minerals	47.066	27.364	19.517	9.090	55.971	22,31%	18,84%	9,90%	18,92%	-0,96%
4. Fertilisers	113.943	88.289	48.699	9.463	146.451	94,60%	-22,41%	62,85%	28,53%	23,05%
Phosphates	628	26	0	655	681	333,33%		5,31%	8,44%	-23,14%
Potashes	1.493	194	3.783	82	4.059	-17,45%	200,72%		171,87%	49,56%
Natural and artificial fertilisers	111.822	88.069	44.916	8.726	141.711	95,15%	-26,97%	68,16%	26,73%	23,07%
5. Chemical Products	434.947	168.450	231.219	54.074	453.743	-7,67%	-1,13%	190,25%	4,32%	-5,50%
Chemical products	434.947	168.450	231.219	54.074	453.743	-7,67%	-1,13%	190,25%	4,32%	-5,50%
6. Building Materials	915.343	613.922	86.024	179.594	879.540	-14,71%	9,43%	53,55%	-3,91%	-11,69%
Asphalt	12.066	238	57	11.581	11.876	-54,92%		0,37%	-1,57%	44,69%
Cement and clinker	40.265	19.389	0	48.239	67.628	11,39%		111,04%	67,96%	71,79%
Elaborated materials of construction	863.012	594.295	85.967	119.774	800.036	-15,32%	9,35%	45,06%	-7,30%	-16,67%
7. Agriculture, Livestock and Foodstuffs	1.324.402	550.970	713.699	268.374	1.533.043	-0,51%	31,56%	17,64%	15,75%	2,02%
Cereals and its flours	237.005	14.914	397.722	2.318	414.954	21,51%	78,30%	38,89%	75,08%	32,31%
Beans of soybean	132	0	452	0	452		322,43%		242,42%	380,00%
Fruits, vegetables and pulses	128.538	45.699	100.748	8.428	154.875	-18,98%	55,70%	13,49%	20,49%	1,70%
Wines, drinks, alcohols and derivatives	326.634	276.350	51.417	57.330	385.097	25,31%	-21,77%	41,99%	17,90%	11,92%
Canned food	51.015	24.509	25.802	3.829	54.140	-13,72%	27,03%	66,70%	6,13%	5,39%
Tobacco, cocoa, coffee and spices	39.285	11.579	30.891	1.136	43.606	5,72%	18,18%	-48,25%	11,00%	9,89%
Oils and fats	68.706	47.012	19.672	10.060	76.744	43,27%	-42,20%	441,73%	11,70%	-2,78%
Other food products	347.578	105.856	48.213	175.940	330.009	-11,89%	-23,28%	6,89%	-5,05%	-9,20%
Frozen and refreshed fish	19.548	2.103	13.389	317	15.809	39,27%	-23,39%	-43,49%	-19,13%	-29,82%
Fodder and forages	105.961	22.948	25.393	9.016	57.357	-67,56%	-9,61%	26,50%	-45,87%	-59,09%
8. Other Goods	1.190.629	340.988	601.507	264.575	1.207.070	-8,92%	4,48%	9,98%	1,38%	-3,09%
Wood and cork	69.345	29.019	36.375	9.124	74.518	40,56%	-4,72%	-13,29%	7,46%	-21,07%
Paper and wood pulp	184.401	99.025	73.397	20.918	193.340	-5,20%	12,36%	43,11%	4,85%	2,10%
Machinery, tools and supplies	353.231	74.165	202.465	90.102	366.732	-27,25%	15,28%	19,09%	3,82%	0,60%
Other goods	583.652	138.779	289.270	144.431	572.480	-5,80%	-2,46%	3,34%	-1,91%	-4,56%
9. Vehicles and Transport Elements	1.825.545	573.189	592.388	692.665	1.858.242	-13,85%	6,40%	14,79%	1,79%	0,68%
Vehicles and its pieces	391.995	144.760	142.310	24.266	311.336	-42,46%	11,98%	82,25%	-20,58%	-7,30%
Tara equipment (Ro-Ro)	678.275	82.451	80.963	592.513	755.927	12,74%	11,42%	11,28%	11,45%	6,43%
Tara of containers	755.275	345.978	369.115	75.886	790.979	1,57%	3,40%	31,62%	4,73%	-0,73%
Total without transshipment	7.043.858	2.532.681	3.025.127	1.632.880	7.190.688	-10,84%	8,41%	15,56%	2,08%	-6,01%
Transshipment	4.438.510	2.373.535	2.413.453	231.138	5.018.126	13,87%	12,69%	8,86%	13,06%	26,77%
TOTAL	11.482.368	4.906.216	5.438.580	1.864.018	12.208.814	-0,38%	10,27%	14,69%	6,33%	6,54%

Graphic by sectors 2023 vs 2024



Export/Import/Domestic 2024



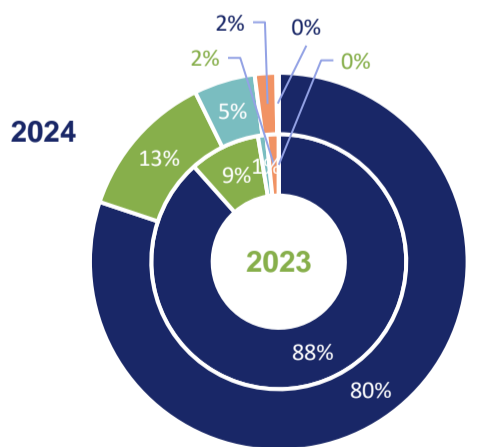
4. CLASSIFICATION OF GOODS BY TYPES AND PACKAGING. PORT AUTHORITY OF VALENCIA

4.1 Liquid Bulk



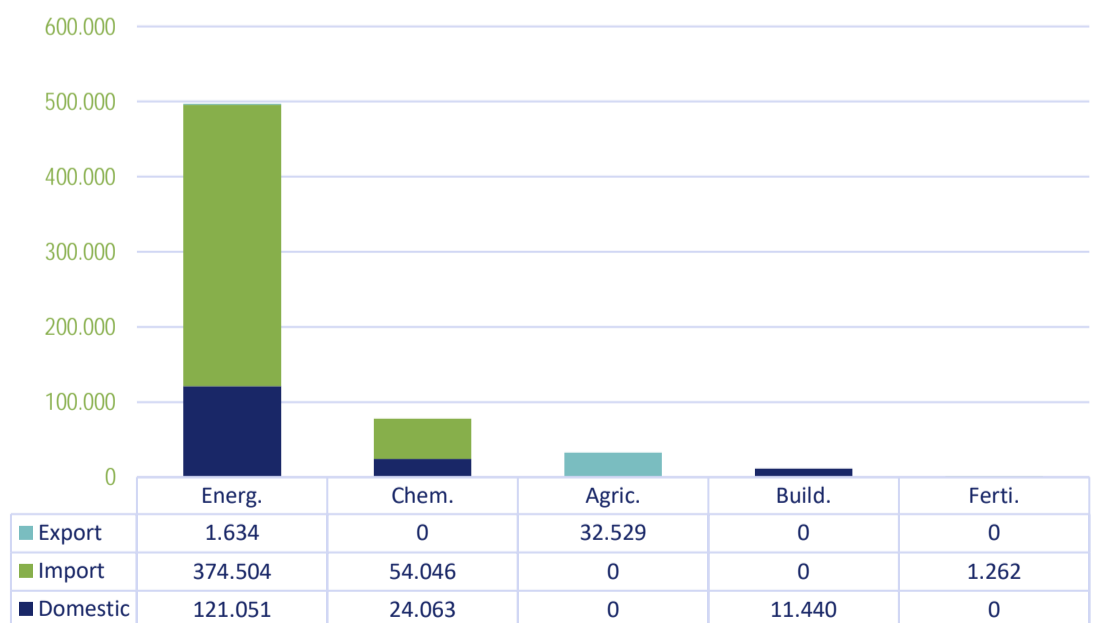
	2024					Δ24/23 Feb. acum				Δ24/23 Jan. acum
	2023	Export	Import	Domestic	TOTAL	Export	Import	Domestic	TOTAL	
1. Energy Products	651.847	1.634	374.504	121.051	497.189	-98,56%	1,61%	-28,66%	-23,73%	-42,67%
Crude oil	0	0	0	0	0	0,00%	0,00%	0,00%	0,00%	0,00%
Fueloil	36.538	0	17.941	2.063	20.004		2,94%	-89,20%	-45,25%	-93,83%
Gasoil	66.396	0	0	0	0					
Petrol	26.001	0	0	0	0					
Other oil products	0	0	0	0	0					
Energetic gases of oil	0	0	0	0	0	0,00%	0,00%	0,00%	0,00%	0,00%
Coal and petroleum coke	0	0	0	0	0	0,00%	0,00%	0,00%	0,00%	0,00%
Natural gas	499.015	1.634	351.724	113.989	467.347	-98,39%	27,28%	-5,83%	-6,35%	-29,03%
Biocombustibles	23.897	0	4.839	4.999	9.838		-42,32%	42,54%	-58,83%	-53,94%
10. Iron and steel products					0					
Iron ore	0	0	0	0	0	0,00%	0,00%	0,00%	0,00%	0,00%
Other minerals and metallic residues	0	0	0	0	0	0,00%	0,00%	0,00%	0,00%	0,00%
Scrap iron	0	0	0	0	0	0,00%	0,00%	0,00%	0,00%	0,00%
Iron and steel products	0	0	0	0	0	0,00%	0,00%	0,00%	0,00%	0,00%
Other metallurgical products	0	0	0	0	0	0,00%	0,00%	0,00%	0,00%	0,00%
11. Non-metallic Minerals					0					
Common salt	0	0	0	0	0	0,00%	0,00%	0,00%	0,00%	0,00%
Other not metallic minerals	0	0	0	0	0	0,00%	0,00%	0,00%	0,00%	0,00%
4. Fertilisers			1.262		1.262					
Phosphates	0	0	0	0	0	0,00%	0,00%			
Potashes	0	0	0	0	0	0,00%	0,00%	0,00%	0,00%	0,00%
Natural and artificial fertilisers	0	0	1.262	0	1.262	0,00%		0,00%		
5. Chemical Products	66.102		54.046	24.063	78.109		-13,97%	632,96%	18,16%	-3,28%
Chemical products	66.102	0	54.046	24.063	78.109		-13,97%	632,96%	18,16%	-3,28%
6. Building Materials	11.448			11.440	11.440			-0,07%	-0,07%	45,07%
Asphalt	11.448	0	0	11.440	11.440	0,00%	0,00%	-0,07%	-0,07%	45,07%
Cement and clinker	0	0	0	0	0	0,00%	0,00%	0,00%	0,00%	0,00%
Elaborated materials of construction	0	0	0	0	0	0,00%	0,00%	0,00%	0,00%	0,00%
7. Agriculture, Livestock and Foodstuffs	7.894	32.529			32.529	502,95%			312,07%	
Cereals and its flours	0	0	0	0	0	0,00%	0,00%	0,00%	0,00%	0,00%
Beans of soybean	0	0	0	0	0	0,00%	0,00%	0,00%	0,00%	0,00%
Fruits, vegetables and pulses	0	0	0	0	0	0,00%	0,00%	0,00%	0,00%	0,00%
Wines, drinks, alcohols and derivatives	5.395	32.529	0	0	32.529	502,95%		0,00%	502,95%	
Canned food	0	0	0	0	0	0,00%	0,00%	0,00%	0,00%	0,00%
Tobacco, cocoa, coffee and spices	0	0	0	0	0	0,00%	0,00%	0,00%	0,00%	0,00%
Oils and fats	2.499	0	0	0	0	0,00%		0,00%		
Other food products	0	0	0	0	0	0,00%		0,00%		
Frozen and refreshed fish	0	0	0	0	0	0,00%	0,00%	0,00%	0,00%	0,00%
Fodder and forages	0	0	0	0	0			0,00%		
8. Other Goods					0					
Wood and cork	0	0	0	0	0	0,00%	0,00%	0,00%	0,00%	0,00%
Paper and wood pulp	0	0	0	0	0	0,00%	0,00%	0,00%	0,00%	0,00%
Machinery, tools and supplies	0	0	0	0	0	0,00%	0,00%	0,00%	0,00%	0,00%
Other goods	0	0	0	0	0		0,00%			
9. Vehicles and Transport Elements	0	0	0	0	0					
Vehicles and its pieces	0	0	0	0	0	0,00%	0,00%	0,00%	0,00%	0,00%
Tara equipment (Ro-Ro)	0	0	0	0	0	0,00%	0,00%	0,00%	0,00%	0,00%
Tara of containers	0	0	0	0	0					
Total without transshipment	737.291	34.163	429.812	156.554	620.529	-71,30%	-0,94%	-15,10%	-15,84%	-33,95%
Transshipment	99.684	26.852	44.747	0	71.599	-30,77%	-26,52%		-28,17%	-33,41%
TOTAL	836.975	61.015	474.559	156.554	692.128	-61,33%	-4,09%	-15,10%	-17,31%	-33,89%

Graphic by sectors 2023 vs 2024



- Energy Products
- Agriculture, Livestock and Foodstuffs
- Chemical Products
- Building Materials
- Fertilisers

Export/Import/Domestic 2024

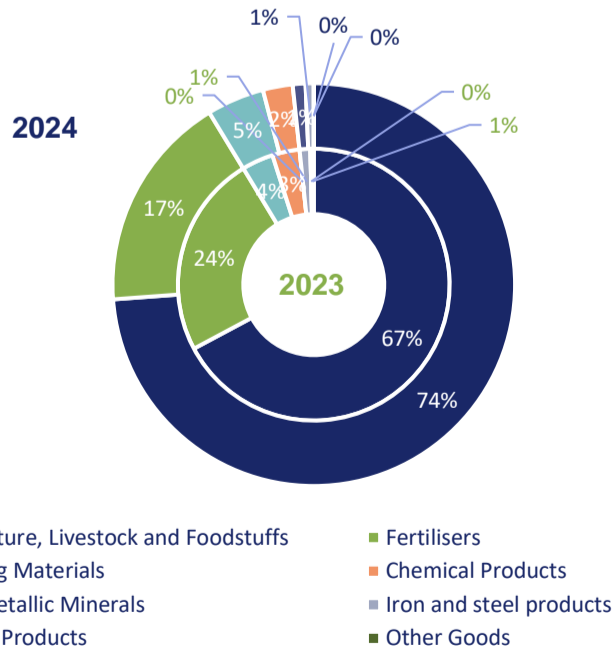


4.2 Solid Bulk

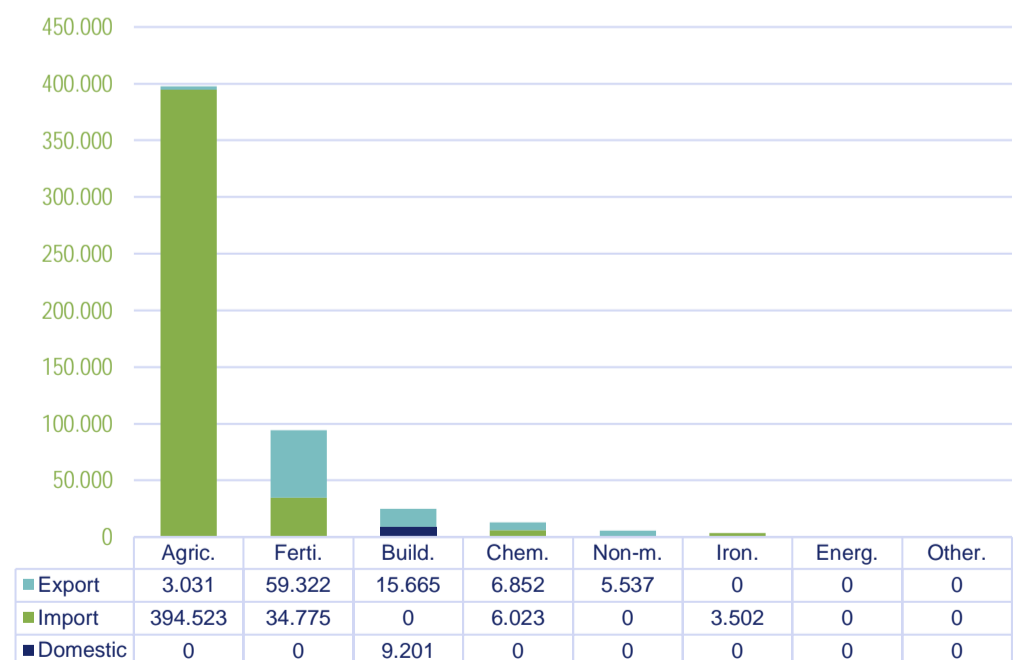


	2024					Δ24/23 Feb. accum				Δ24/23 Jan. accum
	2023	Export	Import	Domestic	TOTAL	Export	Import	Domestic	TOTAL	
1. Energy Products	0	0	0	0	0					
Crude oil	0	0	0	0	0	0,00%	0,00%	0,00%	0,00%	0,00%
Fueloil	0	0	0	0	0	0,00%	0,00%	0,00%	0,00%	0,00%
Gasoil	0	0	0	0	0	0,00%	0,00%	0,00%	0,00%	0,00%
Petrol	0	0	0	0	0	0,00%	0,00%	0,00%	0,00%	0,00%
Other oil products	0	0	0	0	0	0,00%	0,00%	0,00%	0,00%	0,00%
Energetic gases of oil	0	0	0	0	0	0,00%	0,00%	0,00%	0,00%	0,00%
Coal and petroleum coke	0	0	0	0	0	0,00%	0,00%	0,00%	0,00%	0,00%
Natural gas	0	0	0	0	0	0,00%	0,00%	0,00%	0,00%	0,00%
Biocombustibles	0	0	0	0	0	0,00%	0,00%	0,00%	0,00%	0,00%
10. Iron and steel products	3.866	0	3.502	0	3.502		-9,42%		-9,42%	-22,19%
Iron ore	0	0	0	0	0	0,00%	0,00%	0,00%	0,00%	0,00%
Other minerals and metallic residues	3.866	0	3.502	0	3.502	0,00%	-9,42%	0,00%	-9,42%	-22,19%
Scrap iron	0	0	0	0	0					
Iron and steel products	0	0	0	0	0	0,00%	0,00%	0,00%	0,00%	0,00%
Other metallurgical products	0	0	0	0	0	0,00%	0,00%	0,00%	0,00%	0,00%
11. Non-metallic Minerals	0	5.537	0	0	5.537					
Common salt	0	0	0	0	0	0,00%	0,00%	0,00%	0,00%	0,00%
Other not metallic minerals	0	5.537	0	0	5.537					
4. Fertilisers	73.552	59.322	34.775	0	94.097	174,00%	-33,00%		27,93%	15,47%
Phosphates	0	0	0	0	0	0,00%	0,00%	0,00%	0,00%	0,00%
Potashes	0	0	2.573	0	2.573	0,00%				
Natural and artificial fertilisers	73.552	59.322	32.202	0	91.524	174,00%	-37,96%		24,43%	15,47%
5. Chemical Products	9.900	6.852	6.023	0	12.875	-30,79%		0,00%	30,05%	
Chemical products	9.900	6.852	6.023	0	12.875	-30,79%		0,00%	30,05%	
6. Building Materials	11.423	15.665	0	9.201	24.866	37,14%	0,00%		117,68%	134,66%
Asphalt	0	0	0	0	0	0,00%	0,00%	0,00%	0,00%	0,00%
Cement and clinker	11.423	15.665	0	9.201	24.866	37,14%	0,00%	0,00%	117,68%	134,66%
Elaborated materials of construction	0	0	0	0	0		0,00%	0,00%		
7. Agriculture, Livestock and Foodstuffs	204.788	3.031	394.523	0	397.554	196,58%	93,62%		94,13%	28,50%
Cereals and its flours	186.834	3.031	381.720	0	384.751		104,31%		105,93%	44,65%
Beans of soybean	0	0	0	0	0	0,00%	0,00%	0,00%	0,00%	0,00%
Fruits, vegetables and pulses	0	0	0	0	0	0,00%		0,00%		
Wines, drinks, alcohols and derivatives	0	0	0	0	0	0,00%	0,00%	0,00%	0,00%	0,00%
Canned food	0	0	0	0	0	0,00%	0,00%	0,00%	0,00%	0,00%
Tobacco, cocoa, coffee and spices	0	0	0	0	0	0,00%	0,00%	0,00%	0,00%	0,00%
Oils and fats	0	0	0	0	0	0,00%	0,00%	0,00%	0,00%	0,00%
Other food products	0	0	0	0	0	0,00%	0,00%	0,00%	0,00%	0,00%
Frozen and refreshed fish	0	0	0	0	0	0,00%	0,00%	0,00%	0,00%	0,00%
Fodder and forages	17.954	0	12.803	0	12.803		-24,39%		-28,69%	-82,00%
8. Other Goods	1.234	0	0	0	0					
Wood and cork	0	0	0	0	0		0,00%	0,00%	0,00%	0,00%
Paper and wood pulp	0	0	0	0	0	0,00%	0,00%	0,00%	0,00%	0,00%
Machinery, tools and supplies	0	0	0	0	0					
Other goods	1.234	0	0	0	0					
9. Vehicles and Transport Elements	0	0	0	0	0					
Vehicles and its pieces	0	0	0	0	0	0,00%	0,00%	0,00%	0,00%	0,00%
Tara equipment (Ro-Ro)	0	0	0	0	0	0,00%	0,00%	0,00%	0,00%	0,00%
Tara of containers	0	0	0	0	0					
Total without transhipment	304.763	90.407	438.823	9.201	538.431	99,89%	69,08%		76,67%	28,20%
Transhipment	0	0	0	0	0			0,00%		
TOTAL	304.763	90.407	438.823	9.201	538.431	99,89%	69,08%		76,67%	28,20%

Graphic by sectors 2023 vs 2024



Export/Import/Domestic Export

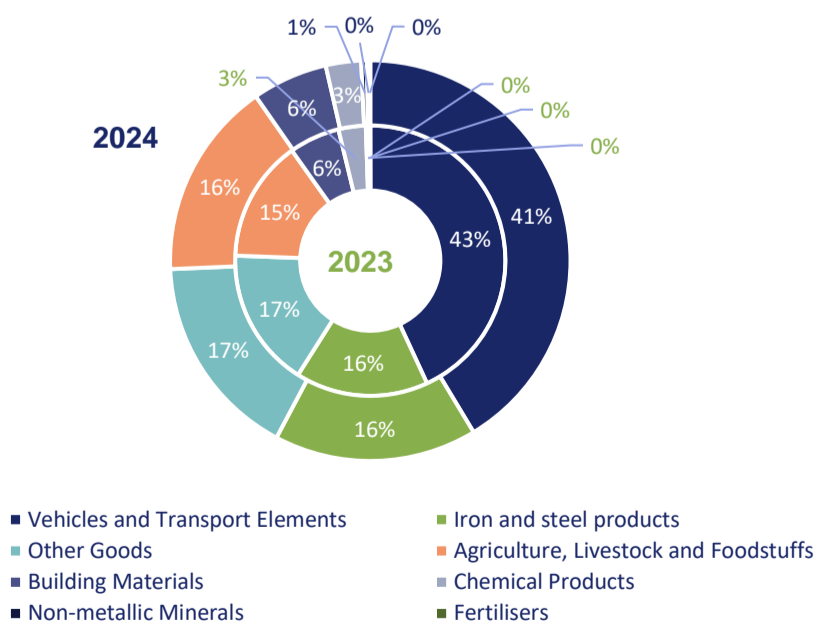


4.3 Convencional General Cargo

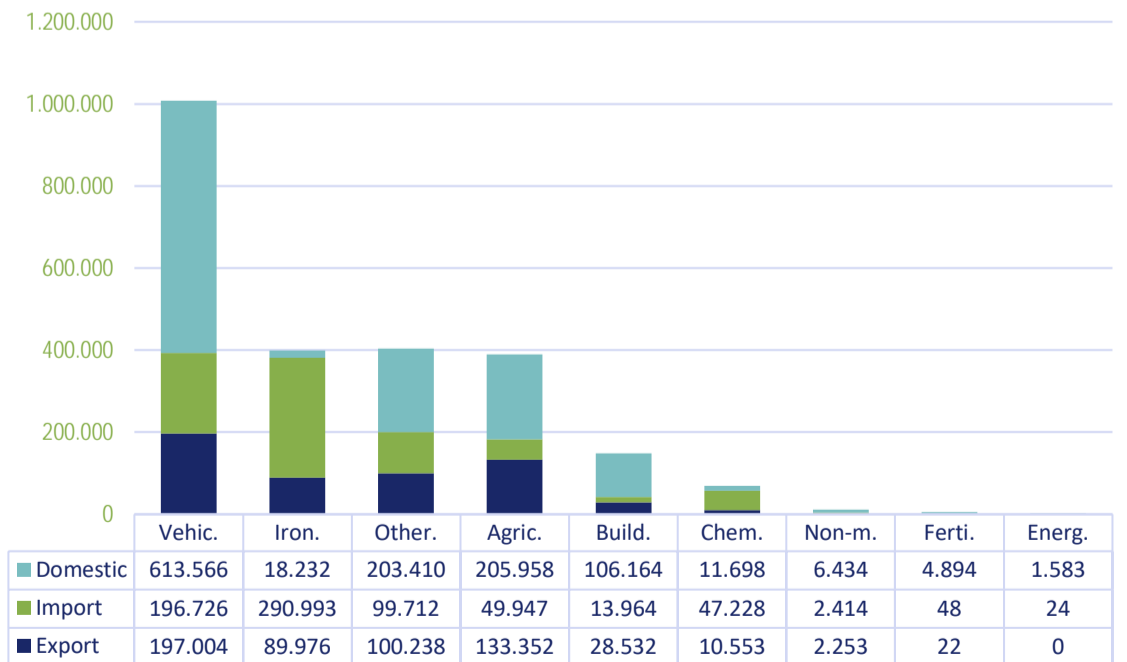


	2024					Δ24/23 Feb. accum				Δ24/23 Jan. accum
	2023	Export	Import	Domestic	TOTAL	Export	Import	Domestic	TOTAL	accum
1. Energy Products	664	0	24	1.583	1.607		-67,12%	179,19%	142,02%	153,50%
Crude oil	20	0	0	0	0	0,00%	0,00%			
Fueloil	89	0	24	0	24		-51,02%		-73,03%	-40,00%
Gasoil	0	0	0	0	0		0,00%			
Petrol	0	0	0	12	12		0,00%			
Other oil products	58	0	0	20	20			-65,52%	-65,52%	
Energetic gases of oil	329	0	0	1.161	1.161	0,00%	0,00%	252,89%	252,89%	264,71%
Coal and petroleum coke	144	0	0	243	243		0,00%	102,50%	68,75%	206,25%
Natural gas	0	0	0	0	0	0,00%	0,00%			
Biocombustibles	24	0	0	147	147				512,50%	91,67%
10. Iron and steel products	375.110	89.976	290.993	18.232	399.201	6,42%	4,22%	60,63%	6,42%	12,05%
Iron ore	1.339	48	30	225	303		25,00%	-82,89%	-77,37%	-72,98%
Other minerals and metallic residues	1.227	0	0	1.070	1.070			-11,06%	-12,80%	18,81%
Scrap iron	3.942	0	810	2.732	3.542		-64,49%	64,48%	-10,15%	-12,55%
Iron and steel products	347.029	85.272	282.429	12.783	380.484	20,55%	4,54%	108,29%	9,64%	16,22%
Other metallurgical products	21.573	4.656	7.724	1.422	13.802	-66,24%	14,50%	37,52%	-36,02%	-49,23%
11. Non-metallic Minerals	8.227	2.253	2.414	6.434	11.101	131,31%	20,88%	22,41%	34,93%	30,07%
Common salt	493	0	0	910	910			84,58%	84,58%	159,12%
Other not metallic minerals	7.734	2.253	2.414	5.524	10.191	131,31%	20,88%	15,98%	31,77%	23,00%
4. Fertilisers	3.647	22	48	4.894	4.964	-8,33%		35,08%	36,11%	42,45%
Phosphates	24	0	0	0	0		0,00%			
Potashes	0	0	0	0	0	0,00%	0,00%			
Natural and artificial fertilisers	3.623	22	48	4.894	4.964	-8,33%		35,98%	37,01%	42,45%
5. Chemical Products	76.986	10.553	47.228	11.698	69.479	-52,21%	-1,19%	64,58%	-9,75%	-1,79%
Chemical products	76.986	10.553	47.228	11.698	69.479	-52,21%	-1,19%	64,58%	-9,75%	-1,79%
6. Building Materials	143.071	28.532	13.964	106.164	148.660	-23,19%	-13,66%	18,29%	3,91%	2,95%
Asphalt	18	0	0	25	25	0,00%	0,00%	38,89%	38,89%	
Cement and clinker	21.832	0	0	36.512	36.512			67,24%	67,24%	69,77%
Elaborated materials of construction	121.221	28.532	13.964	69.627	112.123	-23,19%	-13,66%	2,54%	-7,51%	-9,74%
7. Agriculture, Livestock and Foodstuffs	343.649	133.352	49.947	205.958	389.257	42,76%	-28,43%	14,14%	13,27%	5,68%
Cereals and its flours	1.599	0	208	1.069	1.277		44,44%	2,89%	-20,14%	-22,12%
Beans of soybean	24	0	0	0	0	0,00%	0,00%			
Fruits, vegetables and pulses	8.204	96	0	2.859	2.955	-97,47%		-35,11%	-63,98%	-68,99%
Wines, drinks, alcohols and derivatives	107.871	85.314	21.601	31.701	138.616	55,10%	-33,11%	54,10%	28,50%	22,23%
Canned food	1.852	0	0	2.142	2.142			19,46%	15,66%	27,11%
Tobacco, cocoa, coffee and spices	1.109	338	0	578	916	350,67%		-44,10%	-17,40%	21,45%
Oils and fats	50.332	32.899	17.779	9.387	60.065	60,80%	-37,50%	558,74%	19,34%	0,70%
Other food products	165.518	13.525	8.801	151.705	174.031	5,49%	7,53%	4,98%	5,14%	-1,77%
Frozen and refreshed fish	1.586	1.111	1.198	149	2.458	62,43%	162,72%	-66,59%	54,98%	13,91%
Fodder and forages	5.554	69	360	6.368	6.797	-25,81%	36,36%	22,53%	22,38%	64,38%
8. Other Goods	392.279	100.238	99.712	203.410	403.360	0,09%	-2,17%	6,94%	2,82%	-5,44%
Wood and cork	30.330	4.379	10.956	8.284	23.619	-42,56%	-14,91%	-15,74%	-22,13%	-50,51%
Paper and wood pulp	46.649	20.955	27.222	5.348	53.525	46,80%	-6,09%	57,90%	14,74%	11,62%
Machinery, tools and supplies	105.296	8.831	19.135	73.619	101.585	-50,59%	-11,24%	11,77%	-3,52%	-17,86%
Other goods	210.004	66.073	42.399	116.159	224.631	9,43%	10,12%	4,53%	6,97%	5,20%
9. Vehicles and Transport Elements	1.017.923	197.004	196.726	613.566	1.007.296	-33,84%	12,60%	12,49%	-1,04%	1,24%
Vehicles and its pieces	339.648	114.553	115.763	21.053	251.369	-49,01%	13,44%	62,48%	-25,99%	-10,25%
Tara equipment (Ro-Ro)	678.275	82.451	80.963	592.513	755.927	12,74%	11,42%	11,28%	11,45%	6,43%
Tara of containers	0	0	0	0	0					
Total without transhipment	2.361.556	561.930	701.056	1.171.939	2.434.925	-11,67%	1,36%	13,37%	3,11%	2,83%
Transhipment	25.170	5.122	3.629	879	9.630	-57,36%	-62,81%	-74,15%	-61,74%	-64,65%
TOTAL	2.386.726	567.052	704.685	1.172.818	2.444.555	-12,51%	0,46%	13,08%	2,42%	2,13%

Graphic by sectors 2023 vs 2024



Export/Import/Domestic Export

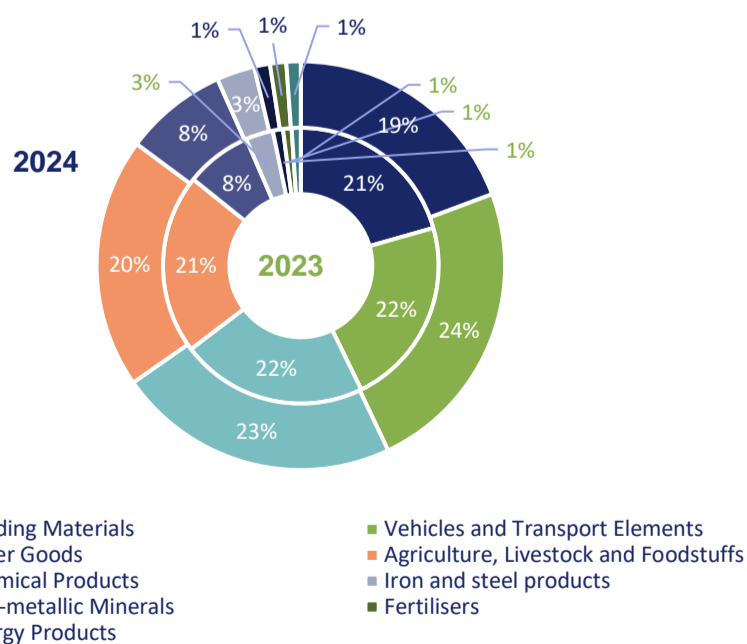


4.4 Containerised General Cargo

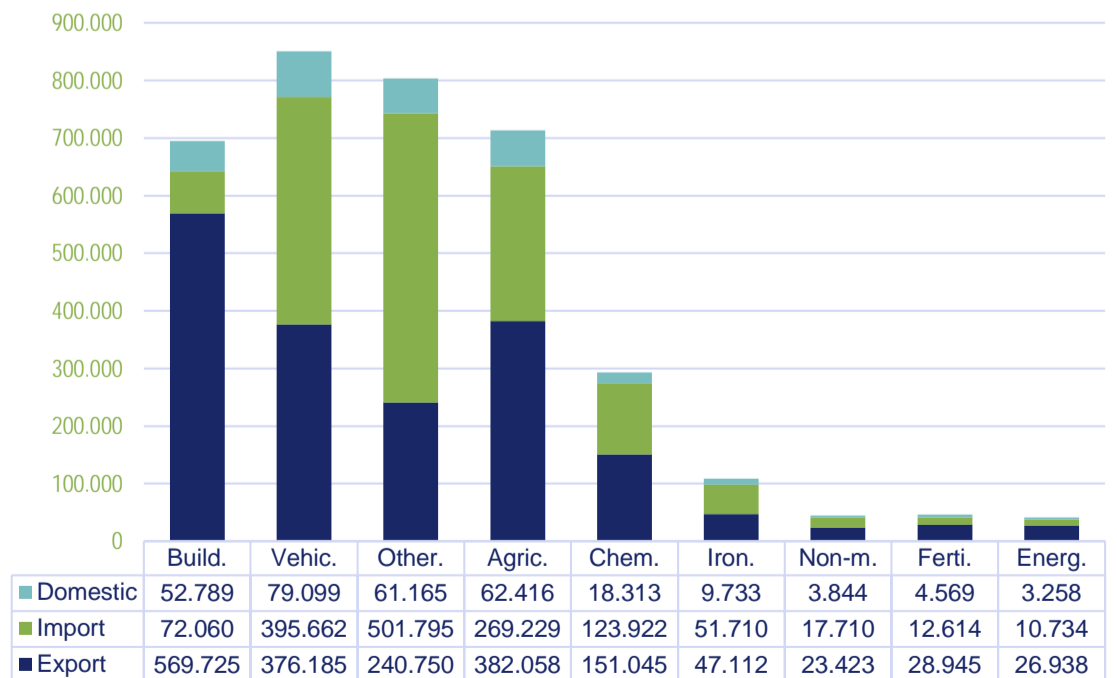


	2024					Δ24/23 Feb. accum				Δ24/23 Jan. accum
	2023	Export	Import	Domestic	TOTAL	Export	Import	Domestic	TOTAL	accum
1. Energy Products	38.730	26.938	10.734	3.258	40.930	7,18%	-2,39%	25,36%	5,68%	12,85%
Crude oil	0	0	0	0	0					
Fueloil	6.049	4.228	869	0	5.097	-9,48%	-27,58%		-15,74%	-27,05%
Gasoil	75	104	0	0	104	38,67%			38,67%	-34,72%
Petrol	0	89	0	0	89					
Other oil products	6.115	6.370	1.770	411	8.551	53,09%	-7,76%	1074,29%	39,84%	57,51%
Energetic gases of oil	299	0	103	293	396		368,18%	5,78%	32,44%	-33,16%
Coal and petroleum coke	3.242	694	1.785	78	2.557	1592,68%	-43,87%	271,43%	-21,13%	21,73%
Natural gas	0	0	0	0	0					
Biocombustibles	22.950	15.453	6.207	2.476	24.136	-4,53%	32,74%	18,58%	5,17%	15,69%
10. Iron and steel products	117.235	47.112	51.710	9.733	108.555	-6,00%	-14,80%	51,56%	-7,40%	-19,74%
Iron ore	0	53	3	0	56					
Other minerals and metallic residues	30.316	20.993	5.073	1.508	27.574	35,83%	-63,24%	42,13%	-9,04%	-32,87%
Scrap iron	3.287	2.124	859	2.246	5.229	72,82%	65,51%	45,94%	59,08%	32,69%
Iron and steel products	58.537	18.290	27.684	3.319	49.293	-35,28%	-7,60%	953,65%	-15,79%	-25,34%
Other metallurgical products	25.095	5.652	18.091	2.660	26.403	9,26%	10,21%	-24,15%	5,21%	4,88%
11. Non-metallic Minerals	43.370	23.423	17.710	3.844	44.977	-6,15%	19,18%	8,25%	3,71%	-5,34%
Common salt	4.038	3.849	607	278	4.734	8,09%	39,86%	546,51%	17,24%	-8,23%
Other not metallic minerals	39.332	19.574	17.103	3.566	40.243	-8,52%	18,56%	1,65%	2,32%	-5,05%
4. Fertilisers	36.744	28.945	12.614	4.569	46.128	22,16%	16,14%	108,82%	25,54%	35,93%
Phosphates	604	26	0	655	681	333,33%		9,53%	12,75%	-23,14%
Potashes	1.493	194	1.210	82	1.486	-17,45%	-3,82%		-0,47%	49,56%
Natural and artificial fertilisers	34.647	28.725	11.404	3.832	43.961	22,47%	18,75%	141,01%	26,88%	36,85%
5. Chemical Products	281.959	151.045	123.922	18.313	293.280	0,38%	0,54%	122,27%	4,02%	-6,93%
Chemical products	281.959	151.045	123.922	18.313	293.280	0,38%	0,54%	122,27%	4,02%	-6,93%
6. Building Materials	749.401	569.725	72.060	52.789	694.574	-15,12%	15,41%	234,89%	-7,32%	-17,91%
Asphalt	600	238	57	116	411	-54,92%		61,11%	-31,50%	23,53%
Cement and clinker	7.010	3.724	0	2.526	6.250	-37,77%		146,20%	-10,84%	-36,41%
Elaborated materials of construction	741.791	565.763	72.003	50.147	687.913	-14,88%	15,32%	241,95%	-7,26%	-17,72%
7. Agriculture, Livestock and Foodstuffs	768.071	382.058	269.229	62.416	713.703	-15,84%	1,05%	30,90%	-7,08%	-14,73%
Cereals and its flours	48.572	11.883	15.794	1.249	28.926	0,21%	-56,23%	98,25%	-40,45%	-40,09%
Beans of soybean	108	0	452	0	452		322,43%		318,52%	380,00%
Fruits, vegetables and pulses	120.334	45.603	100.748	5.569	151.920	-13,31%	55,70%	84,40%	26,25%	6,39%
Wines, drinks, alcohols and derivatives	213.368	158.507	29.816	25.629	213.952	-1,02%	-10,81%	29,41%	0,27%	-12,97%
Canned food	49.163	24.509	25.802	1.687	51.998	-13,54%	27,03%	234,72%	5,77%	4,66%
Tobacco, cocoa, coffee and spices	38.176	11.241	30.891	558	42.690	3,35%	18,18%	-51,94%	11,82%	9,53%
Oils and fats	15.875	14.113	1.893	673	16.679	14,24%	-38,72%	55,79%	5,06%	-14,98%
Other food products	182.060	92.331	39.412	24.235	155.978	-13,96%	-27,89%	20,66%	-14,33%	-16,09%
Frozen and refreshed fish	17.962	992	12.191	168	13.351	20,10%	-28,38%	46,09%	-25,67%	-35,43%
Fodder and forages	82.453	22.879	12.230	2.648	37.757	-67,14%	12,22%	37,20%	-54,21%	-55,80%
8. Other Goods	797.116	240.750	501.795	61.165	803.710	-11,81%	5,92%	21,45%	0,83%	-1,89%
Wood and cork	39.015	24.640	25.419	840	50.899	89,22%	0,47%	21,39%	30,46%	4,28%
Paper and wood pulp	137.752	78.070	46.175	15.570	139.815	-13,43%	27,07%	38,65%	1,50%	-1,64%
Machinery, tools and supplies	247.935	65.334	183.330	16.483	265.147	-22,29%	18,99%	68,31%	6,94%	8,79%
Other goods	372.414	72.706	246.871	28.272	347.849	-15,18%	-4,33%	-1,31%	-6,60%	-9,99%
9. Vehicles and Transport Elements	807.622	376.185	395.662	79.099	850.946	2,34%	3,57%	36,34%	5,36%	-0,01%
Vehicles and its pieces	52.347	30.207	26.547	3.213	59.967	12,09%	6,02%	797,49%	14,56%	10,59%
Tara equipment (Ro-Ro)	0	0	0	0	0	0,00%	0,00%	0,00%	0,00%	0,00%
Tara of containers	755.275	345.978	369.115	75.886	790.979	1,57%	3,40%	31,62%	4,73%	-0,73%
Total without transhipment	3.640.248	1.846.181	1.455.436	295.186	3.596.803	-9,51%	3,57%	51,52%	-1,19%	-8,16%
Transhipment	4.313.656	2.341.561	2.365.077	230.259	4.936.897	15,14%	14,20%	10,21%	14,45%	28,77%
TOTAL	7.953.904	4.187.742	3.820.513	525.445	8.533.700	2,80%	9,90%	30,14%	7,29%	12,11%

Graphic by sectors 2023 vs 2024



Export/Import/Domestic Export

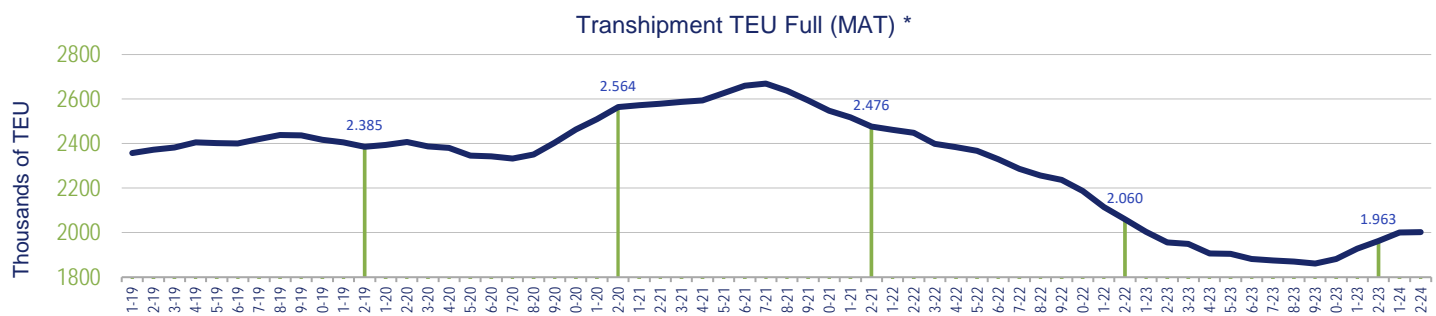
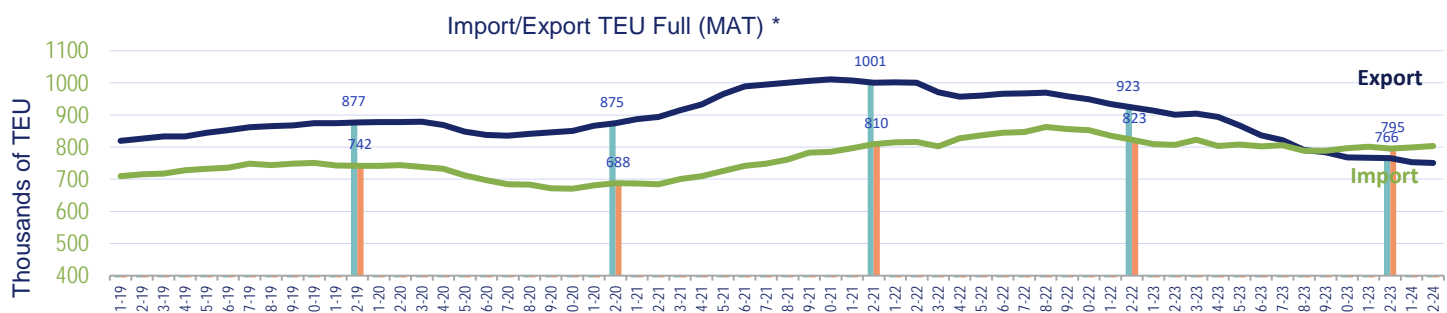
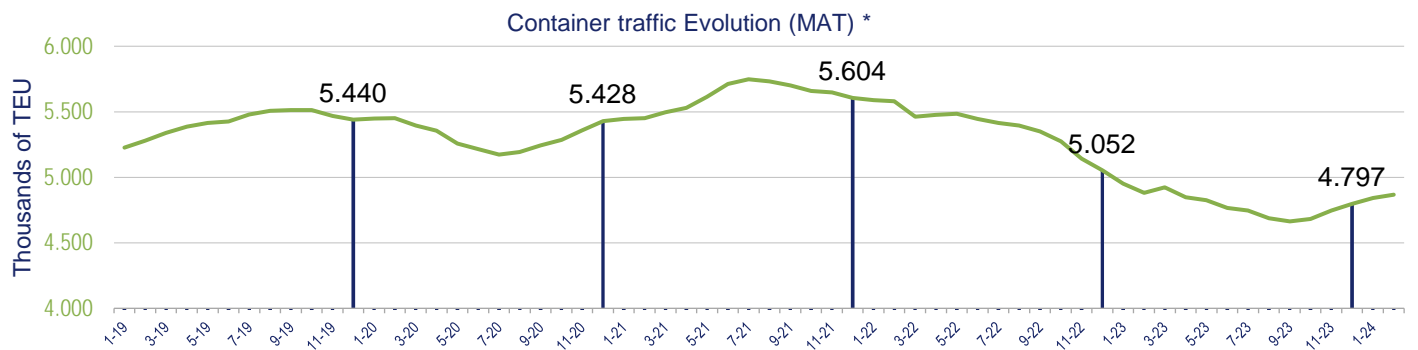


5. CONTAINER TRAFFIC



TEU	2023	2024		Δ24/23 Feb. accum	Δ24/23 Jan. accum	Annual trend
		Domestic	Foreign			
Loaded	181.574	22.025	170.902	6,25%	-2,83%	-6,02%
Full	138.727	16.991	112.930	-6,35%	-15,92%	-11,80%
Empty	42.847	5.034	57.972	47,05%	41,08%	11,16%
Unloaded	189.654	13.802	181.722	3,10%	1,51%	-4,22%
Full	118.861	3.926	123.288	7,03%	5,96%	-0,30%
Empty	70.793	9.876	58.434	-3,51%	-5,88%	-11,31%
Transshipment	341.811	18.694	376.950	15,75%	26,51%	5,30%
TOTAL	713.039	54.521	729.574	9,97%	12,73%	-0,25%

Tonnes	2023	2024		Δ24/23 Feb. accum	Δ24/23 Jan. accum	Annual trend
		Domestic	Foreign			
Loaded	2.176.656	236.184	1.846.181	-4,33%	-14,97%	-9,77%
Goods	1.807.848	189.740	1.500.203	-6,52%	-17,38%	-10,47%
Tares	368.808	46.444	345.978	6,40%	-2,97%	-6,41%
Unloaded	1.463.592	59.002	1.455.436	3,47%	2,08%	-1,84%
Goods	1.077.125	29.560	1.086.321	3,60%	2,32%	-1,00%
Tares	386.467	29.442	369.115	3,13%	1,40%	-4,19%
Transshipment	4.313.656	230.259	4.706.638	14,45%	28,77%	6,58%
Goods	3.610.547	191.233	3.933.604	14,24%	29,29%	6,79%
Tares	703.109	39.026	773.034	15,50%	26,14%	5,51%
TOTAL	7.953.904	525.445	8.008.255	7,29%	12,11%	0,32%
Goods	6.495.520	410.533	6.520.128	6,70%	12,02%	0,45%
Tares	1.458.384	114.912	1.488.127	9,92%	12,54%	-0,23%

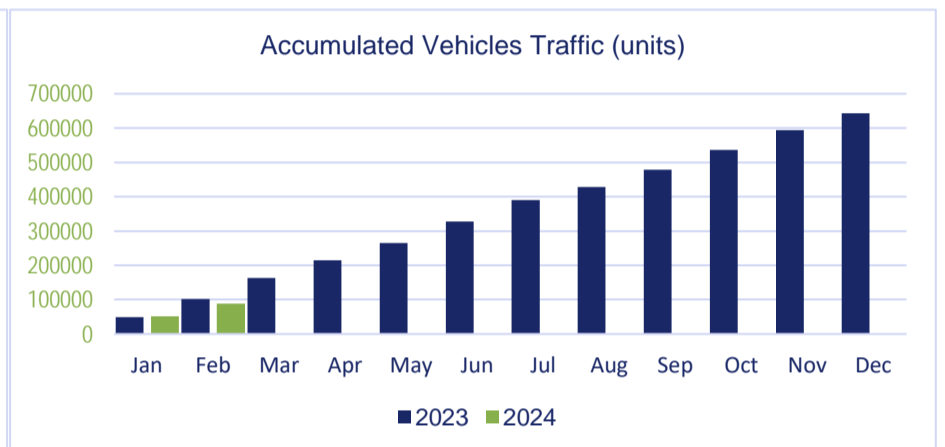
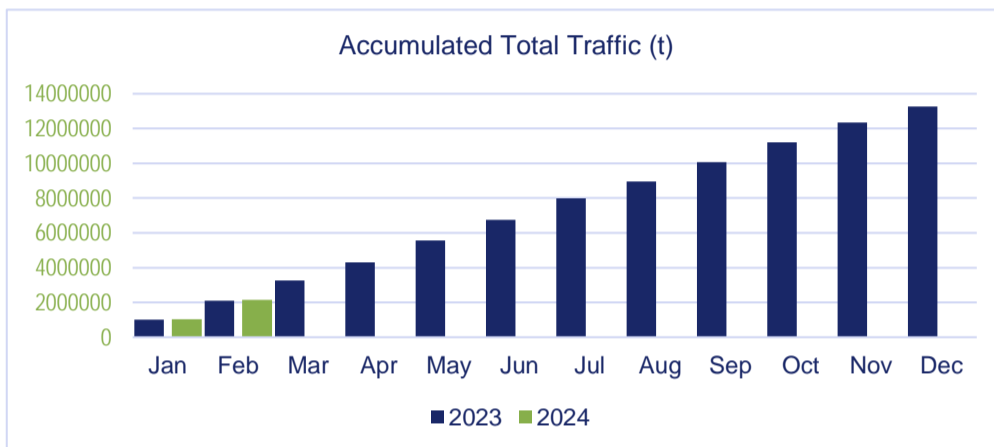


*MAT: Moving Annual Total

6. RORO TRAFFIC



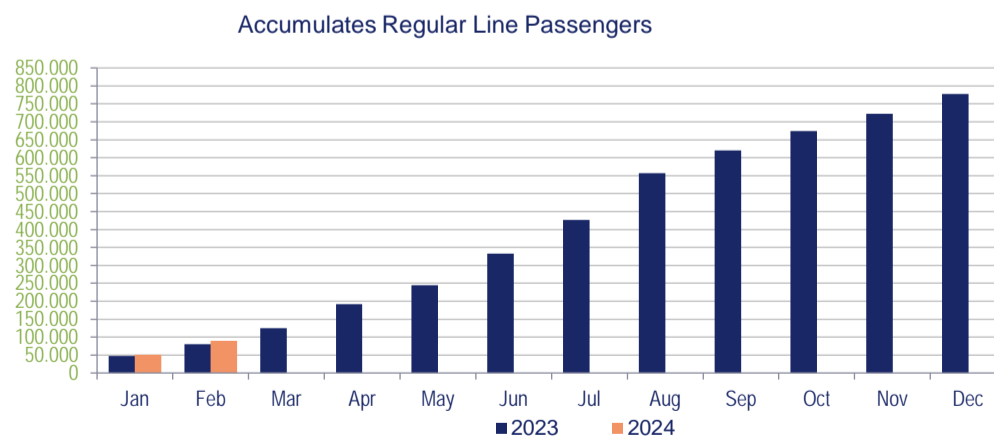
	2023	Export	Import	2024		TOTAL	Δ24/23 Feb. accum	Δ24/23 Jan. accum	Annual trend
				Domestic	Tránsito				
Total traffic	2.100.587	514.873	413.712	1.220.146	7.242	2.155.973	2,64%	1,04%	2,00%
UTI (units)	71.038	13.685	13.428	52.221	0	79.334	11,68%	6,65%	3,06%
Containers (TEU)	8.853	1.174	1.339	6.566	45	9.124	3,06%	-8,73%	-16,57%
Vehicles (units)	102.297	41.844	31.407	12.659	2.694	88.604	-13,39%	3,38%	3,07%



7. PASSENGER TRAFFIC



	2023	2024		TOTAL	Δ24/23 Feb. accum	Δ24/23 Jan. accum	Annual trend
		Domestic	Foreign				
Regular Lines	80.081	81.319	8.075	89.394	11,63%	9,14%	5,43%
Embarking	47.675	50.454	4.283	54.737	14,81%	14,78%	7,23%
Disembarking	32.406	30.865	3.792	34.657	6,95%	-0,05%	3,47%
Transshipment	0	0	0	0			
Cruise	17.117	13.734	24.942	38.676	125,95%	356,33%	29,06%
Embarking	22	6.441	468	6.909	31304,55%	165350,00%	28,03%
Disembarking	14	23	6.689	6.712	47842,86%	55666,67%	26,14%
Transshipment	17.081	7.270	17.785	25.055	46,68%	231,62%	29,72%
Total Passengers	97.198	95.053	33.017	128.070	31,76%	44,55%	16,18%
Number of Cruise ships	8	-	-	11	37,50%	133,33%	-3,55%
Number of Ropax ships	346	-	-	320	-7,51%	-6,88%	-9,67%

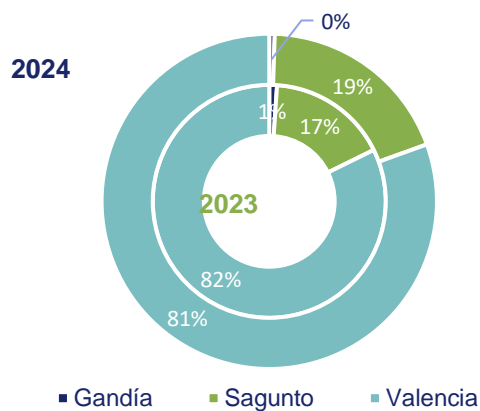


8. VESSELS TRAFFIC

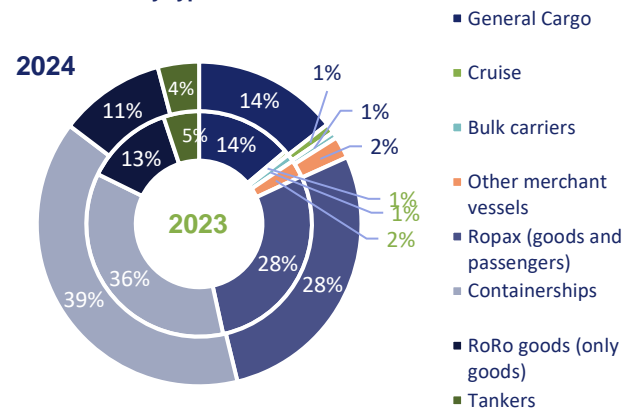


	2023	2024	Δ24/23 Feb. accum	Δ24/23 Jan. accum	Annual trend
Number of calls	1.213	1.145	-5,61%	-5,50%	-0,90%
Valencia	998	922	-7,62%	-5,79%	-1,05%
Gandía	13	6	-53,85%	-57,14%	-34,57%
Sagunto	202	217	7,43%	-0,89%	1,96%
GT (thousands)	47.417	42.412	-10,56%	-12,58%	0,46%
Type of vessels	1.213	1.145	-5,61%	-5,50%	-0,90%
Tankers	62	47	-24,19%	-33,33%	-0,30%
Bulk carriers	13	7	-46,15%	-37,50%	-7,25%
General cargo	168	166	-1,19%	-9,68%	-3,12%
RoRo goods (only goods)	153	121	-20,92%	-20,24%	-8,58%
Ropax (goods and passengers)	346	320	-7,51%	-6,88%	-9,67%
Cruise	8	11	37,50%	133,33%	-3,55%
Containerships	433	448	3,46%	5,22%	10,90%
Other merchant vessels	30	25	-16,67%	7,14%	-1,38%

Ports distribution 2023 vs 2024



Distribution by type of vessels 2023 vs 2024



9. LAND TRAFFIC

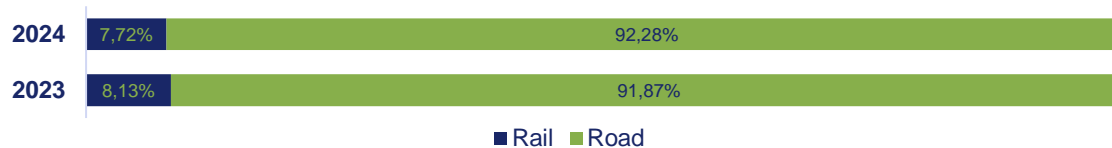
(without including transshipment, fishing and supplies)



TEU	2023	2024	Δ24/23 Feb. accum	Δ24/23 Jan. accum
Rail	36.477	37.466	2,71%	4,22%
Road	334.751	350.985	4,85%	-1,13%
TOTAL (TEU)	371.228	388.451	4,64%	-0,61%

tonnes	2023	2024	Δ24/23 Feb. accum	Δ24/23 Jan. accum
Rail	543.578	521.395	-4,08%	0,71%
Road	6.138.595	6.229.886	1,49%	-7,57%
Pipeline	361.685	439.407	21,49%	7,67%
Other	0	0	0,00%	0,00%
TOTAL LAND TRANSPORT	7.043.858	7.190.688	2,08%	-6,01%

Rail & Road Traffic (tonnes)



10. TRAFFIC BY ORIGIN/DESTINATION

10.1 Traffic by Geographical Areas (t)



	2023	2024			TOTAL	Δ24/23 Feb. accum	Δ24/23 Jan. accum
		Loaded	Unloaded	Transhipment			
MEDITERRANEAN SEA AND BLACK SEA	3.073.029	850.316	1.168.494	1.583.870	3.602.680	17,24%	26,35%
SPAIN	1.625.293	1.092.512	540.368	231.138	1.864.018	14,69%	-3,51%
FAR EAST	1.325.569	361.071	744.428	444.051	1.549.550	16,90%	38,80%
WEST AFRICA	1.001.278	271.108	188.655	360.773	820.536	-18,05%	-19,80%
INDIA-PAKISTAN-BANGLA-DESH-SRI LANKA	586.760	37.537	116.053	424.873	578.463	-1,41%	-2,08%
USA (SOUTH ATLANTIC AND GULF)	572.508	105.176	248.169	223.905	577.250	0,83%	4,59%
ATLANTIC EUROPE	669.909	143.727	141.367	267.613	552.707	-17,50%	-9,55%
SOUTH AMERICA (ATLANTIC OCEAN)	402.569	42.407	50.113	347.970	440.490	9,42%	9,41%
MEXICO-CENTRAL AMERICA (CARIBBEAN SEA)	487.755	202.069	73.073	137.956	413.098	-15,31%	-33,50%
ARABIAN GULF	370.632	111.674	22.002	274.288	407.964	10,07%	-13,77%
CANADA-USA (NORTH ATLANTIC)	357.793	127.007	49.744	89.644	266.395	-25,54%	-32,39%
RED SEA	163.215	38.992	18.353	206.042	263.387	61,37%	129,58%
CANADA-USA (GREAT LAKES)	213.579	41.124	12.295	142.861	196.280	-8,10%	-2,08%
BALTIC COUNTRIES	97.244	38.008	58.538	85.871	182.417	87,59%	150,17%
CENTRAL AND SOUTH AMERICA (PACIFIC OCEAN)	170.352	50.392	53.901	68.408	172.701	1,38%	-24,69%
CANADA-USA (PACIFIC OCEAN)	89.658	27.288	16.431	47.799	91.518	2,07%	-12,09%
SOUTH AND EAST AFRICA	106.860	25.681	20.567	44.001	90.249	-15,54%	-16,90%
AUSTRALIA	65.065	22.298	1.010	24.450	47.758	-26,60%	-57,21%
NEW ZELAND	43.247	5.661	3.598	11.563	20.822	-51,85%	-56,28%
ARCTIC RUSSIA						-100,00%	-100,00%
TOTAL	11.482.368	3.625.193	3.565.495	5.018.126	12.208.814	6,33%	6,54%

10.2 Traffic by Geographical Areas (TEU)



	2023	Loaded	2024			Δ24/23 Feb. accum	Δ24/23 Jan. accum
			Unloaded	Transhipment	TOTAL		
Full TEU	544.735	129.921	127.214	326.741	583.876	7,19%	11,40%
FAR EAST	104.886	21.758	72.447	30.629	124.834	19,02%	37,39%
MEDITERRANEAN SEA AND BLACK SEA	106.107	16.073	16.773	99.640	132.486	24,86%	42,43%
WEST AFRICA	44.194	12.724	1.721	20.462	34.907	-21,01%	-26,09%
SOUTH AMERICA (ATLANTIC OCEAN)	25.393	3.189	2.542	22.152	27.883	9,81%	17,14%
SPAIN	29.065	16.991	3.926	15.992	36.909	26,99%	22,95%
INDIA-PAKISTAN-BANGLA-DESH-SRI LANKA	41.905	2.475	8.590	26.989	38.054	-9,19%	-12,24%
ARABIAN GULF	20.942	7.037	1.223	18.132	26.392	26,02%	14,25%
MEXICO-CENTRAL AMERICA (CARIBBEAN SEA)	31.152	13.474	3.457	9.092	26.023	-16,46%	-29,19%
USA (SOUTH ATLANTIC AND GULF)	29.572	7.107	3.993	17.192	28.292	-4,33%	-7,13%
CANADA-USA (NORTH ATLANTIC)	26.650	10.256	3.396	7.010	20.662	-22,47%	-30,43%
ATLANTIC EUROPE	23.854	3.038	279	16.668	19.985	-16,22%	2,59%
RED SEA	10.211	2.728	663	14.322	17.713	73,47%	134,67%
CANADA-USA (GREAT LAKES)	16.155	3.112	947	10.313	14.372	-11,04%	-6,86%
CENTRAL AND SOUTH AMERICA (PACIFIC OCEAN)	11.775	3.726	3.766	3.864	11.356	-3,56%	-30,24%
CANADA-USA (PACIFIC OCEAN)	6.378	1.688	1.329	3.198	6.215	-2,56%	-23,66%
BALTIC COUNTRIES	3.968	602	787	5.914	7.303	84,05%	180,52%
SOUTH AND EAST AFRICA	6.103	1.776	1.099	2.502	5.377	-11,90%	-17,39%
AUSTRALIA	3.694	1.769	74	1.887	3.730	0,97%	-31,32%
NEW ZELAND	2.731	398	202	783	1.383	-49,36%	-57,55%
Empty TEU	168.304	63.006	68.310	68.903	200.219	18,96%	17,13%
TOTAL	713.039	192.927	195.524	395.644	784.095	9,97%	12,73%

10.3 Traffic by Countries (t)

	2024					Δ24/23 Feb. accum				Δ24/23 Jan. accum
	2023	Loaded	Unloaded	Transshipment	TOTAL	Loaded	Unloaded	Transshipment	TOTAL	
SPAIN	1.625.293	1.092.512	540.368	231.138	1.864.018	21,65%	4,94%	8,86%	14,69%	-3,51%
ITALY	1.164.739	504.547	394.168	206.254	1.104.969	-9,06%	-2,40%	0,09%	-5,13%	-0,73%
CHINA	811.505	154.934	570.490	348.865	1.074.289	4,67%	17,69%	95,19%	32,38%	58,66%
UNITED STATES	977.951	248.606	234.916	326.400	809.922	-9,99%	-11,32%	-25,28%	-17,18%	-23,17%
TURKEY	500.209	94.022	147.519	350.145	591.686	26,54%	27,05%	13,03%	18,29%	29,74%
ALGERIA	361.884	636	54.621	501.260	556.517	-55,65%	316,00%	44,32%	53,78%	108,01%
INDIA	460.978	25.865	79.552	364.680	470.097	-59,64%	0,78%	14,69%	1,98%	3,54%
BRAZIL	318.146	29.896	25.485	289.032	344.413	-28,72%	-47,20%	26,80%	8,26%	12,38%
EGYPT	209.219	57.422	55.063	215.735	328.220	28,11%	-29,05%	148,57%	56,88%	86,40%
SAUDI ARABIA	164.688	54.394	15.316	245.857	315.567	-29,10%	57,12%	214,29%	91,62%	109,88%
UKRAINE	90.933		290.388	198	290.586	-100,00%	247,18%	-72,84%	219,56%	20,21%
MOROCCO	271.995	116.120	14.942	124.508	255.570	29,44%	-52,94%	-17,29%	-6,04%	-11,65%
FRANCE	214.212	15.904	133.710	103.609	253.223	74,81%	4,00%	35,35%	18,21%	31,93%
CANADA	253.666	51.646	19.020	177.718	248.384	-11,89%	31,06%	-1,56%	-2,08%	-3,96%
NIGERIA	119.680	11.797	138.960	35.716	186.473	-44,77%	97,58%	27,59%	55,81%	8,99%
MEXICO	218.276	69.257	26.877	87.068	183.202	-13,25%	-32,03%	-11,96%	-16,07%	-25,35%
NETHERLANDS	169.898	28.574	75.139	55.575	159.288	-0,27%	32,77%	-34,35%	-6,24%	-7,21%
UNITED KINGDOM	198.821	71.539	6.420	56.184	134.143	-19,94%	-52,38%	-41,46%	-32,53%	-24,65%
UNITED ARAB EM	168.068	46.182	4.499	80.995	131.676	-35,34%	-91,23%	78,56%	-21,65%	-45,04%
BELGIUM	122.270	10.765	29.206	89.908	129.879	-66,72%	60,83%	25,28%	6,22%	44,14%
Others	3.059.937	940.575	708.836	1.127.281	2.776.692	-12,20%	-9,73%	-6,33%	-9,26%	-5,09%
Total general	11.482.368	3.625.193	3.565.495	5.018.126	12.208.814	-3,03%	7,87%	13,06%	6,33%	6,54%

10.4 Traffic by Countries (TEU)

	2024					Δ24/23 Feb. accum	Δ24/23 Jan. accum
	2023	Loaded	Unloaded	Transshipment	TOTAL		
Full TEU	544.735	129.921	127.214	326.741	583.876	7,19%	11,40%
CHINA	72.035	7.527	62.119	23.990	93.636	29,99%	52,97%
UNITED STATES	59.799	18.286	8.347	25.601	52.234	-12,65%	-18,65%
SPAIN	29.065	16.991	3.926	15.992	36.909	26,99%	22,95%
TURKEY	29.785	3.018	10.629	20.816	34.463	15,71%	35,43%
ALGERIA	22.151	27	105	31.254	31.386	41,69%	78,57%
INDIA	30.557	1.722	4.538	22.740	29.000	-5,10%	-5,02%
BRAZIL	20.176	2.253	1.759	18.872	22.884	13,42%	25,56%
SAUDI ARABIA	10.376	3.851	408	16.196	20.455	97,14%	123,71%
EGYPT	9.247	3.339	3.106	11.812	18.257	97,44%	122,04%
CANADA	18.886	3.852	1.318	12.104	17.274	-8,54%	-9,23%
MEXICO	17.191	5.508	1.923	5.861	13.292	-22,68%	-29,26%
MOROCCO	13.063	4.962	341	7.786	13.089	0,20%	-7,05%
ITALY	13.472	82	17	12.909	13.008	-3,44%	2,48%
ISRAEL	10.109	2.419	1.469	5.412	9.300	-8,00%	-7,55%
UNITED ARAB EMIRATES	9.401	3.041	317	5.905	9.263	-1,47%	-13,31%
GREECE	3.931	2.372	719	3.942	7.033	78,91%	126,09%
FRANCE	5.432	68	8	6.261	6.337	16,66%	7,33%
UNITED KINGDOM	10.026	2.488	8	3.820	6.316	-37,00%	-19,78%
BELGIUM	4.929	36	51	6.187	6.274	27,29%	110,26%
VIET NAM	5.759	1.417	2.838	1.439	5.694	-1,13%	24,84%
Others	149.345	46.662	23.268	67.842	137.772	-7,75%	-10,91%
Empty TEU	168.304	63.006	68.310	68.903	200.219	18,96%	17,13%
Total general	713.039	192.927	195.524	395.644	784.095	9,97%	12,73%

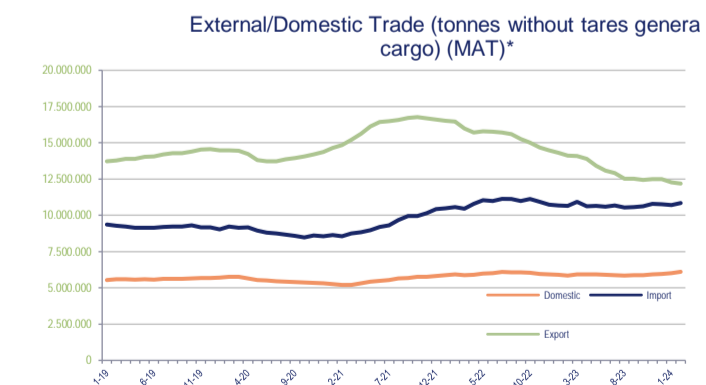
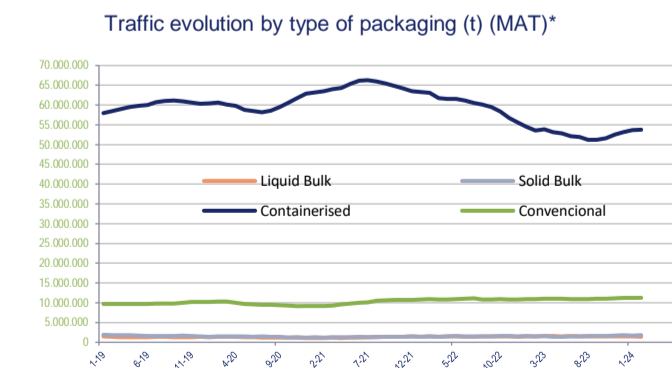
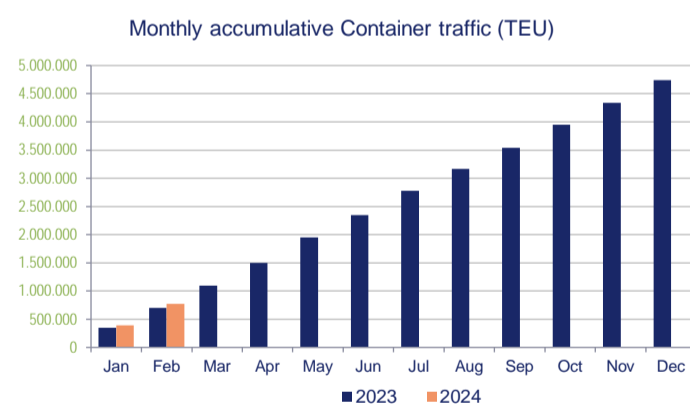
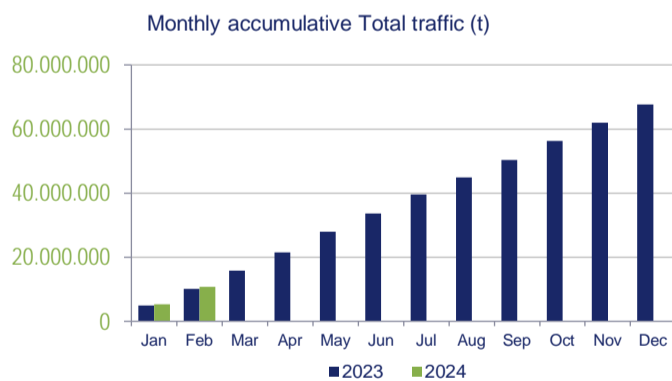
11. TRAFFIC BY PORTS

11.1 Port of Valencia

11.1.1 Main Figures



	2023	2024	Δ24/23 Feb. accum	Δ24/23 Jan. accum	Annual trend
Total traffic (t)	10.224.578	10.831.839	5,94%	7,31%	1,12%
Liquid Bulk	307.691	167.325	-45,62%	-54,40%	-7,49%
Solid Bulk	228.463	315.968	38,30%	-25,20%	22,50%
Convencional General Cargo	1.747.299	1.814.236	3,83%	2,10%	3,06%
Containerised General Cargo	7.874.474	8.453.705	7,36%	12,24%	0,34%
Fishing	50	50	0,00%	0,00%	-2,39%
Supplies	66.601	80.555	20,95%	2,30%	5,63%
Traffic structure (t)	10.157.927	10.751.234	5,84%	7,34%	1,10%
Loaded/Unloaded	5.725.270	5.736.748	0,20%	-8,11%	-3,08%
Loaded	3.277.112	3.189.332	-2,68%	-10,02%	-5,88%
Unloaded	2.448.158	2.547.416	4,05%	-5,64%	0,76%
Transhipment	4.432.657	5.014.486	13,13%	26,93%	6,63%
Vessels Number	998	922	-7,62%	-5,79%	-1,05%
GT	41.720.342	38.100.661	-8,68%	-8,40%	0,82%
Containers (TEU)	703.300	775.296	10,24%	13,15%	-0,22%
Full	539.373	578.073	7,17%	11,43%	-1,97%
Loaded	134.923	126.008	-6,61%	-16,39%	-12,12%
Unloaded	117.303	125.328	6,84%	5,67%	-0,48%
Transhipment	287.147	326.737	13,79%	26,14%	2,33%
Empty	163.927	197.223	20,31%	18,97%	5,78%
Passengers (units)	97.198	128.070	31,76%	44,55%	16,18%
Regular Lines	80.081	89.394	11,63%	9,14%	5,43%
Cruise	17.117	38.676	125,95%	356,33%	29,06%
Vehicles (units)	81.980	61.452	-25,04%	-12,05%	-6,59%



*MAT: Moving Annual Total

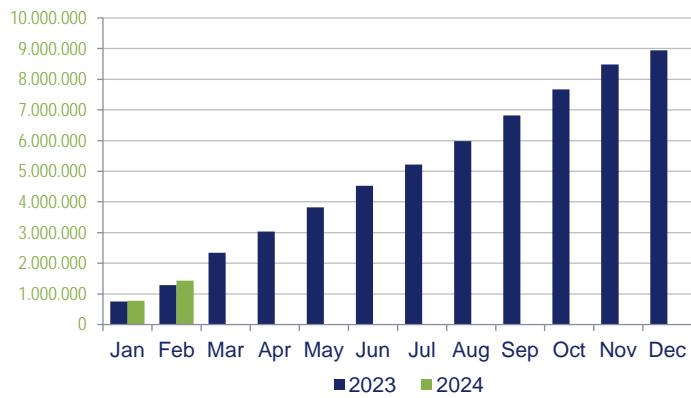
11.2 Port of Sagunto

11.2.1 Main Figures

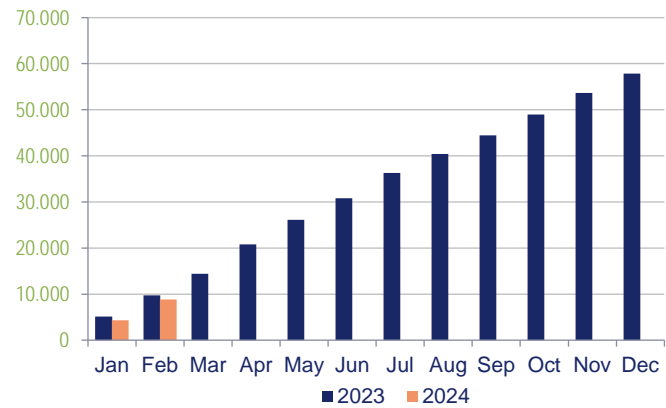


	2023	2024	Δ24/23 Feb. accum	Δ24/23 Jan. accum	Annual trend
Total traffic (t)	1.292.313	1.441.397	11,54%	2,45%	-1,54%
Liquid Bulk	529.284	524.803	-0,85%	-24,57%	-11,74%
Solid Bulk	76.300	222.463	191,56%	200,09%	16,62%
Convencional General Cargo	603.033	609.860	1,13%	4,78%	6,49%
Containerised General Cargo	79.430	79.995	0,71%	-0,81%	-1,35%
Fishing	4	0			-88,57%
Supplies	4.262	4.276	0,33%	26,06%	12,26%
Traffic structure (t)	1.288.047	1.437.121	11,57%	2,40%	-1,57%
Loaded/Unloaded	1.282.194	1.433.481	11,80%	2,72%	-1,66%
Loaded	448.774	435.861	-2,88%	-23,35%	-0,27%
Unloaded	833.420	997.620	19,70%	17,31%	-2,22%
Transshipment	5.853	3.640	-37,81%	-63,46%	22,30%
Vessels Number	202	217	7,43%	-0,89%	1,96%
GT	5.617.017	4.240.450	-24,51%	-40,93%	-2,45%
Containers (TEU)	9.739	8.799	-9,65%	-15,87%	-2,58%
Full	5.362	5.803	8,22%	8,47%	5,16%
Loaded	3.804	3.913	2,87%	0,65%	0,16%
Unloaded	1.558	1.886	21,05%	26,20%	15,13%
Transshipment		4			183,43%
Empty	4.377	2.996	-31,55%	-42,28%	-13,77%
Passengers (units)	0	0			
Regular Lines	0	0			
Cruise					
Vehicles (units)	20.317	27.152	33,64%	62,95%	42,57%

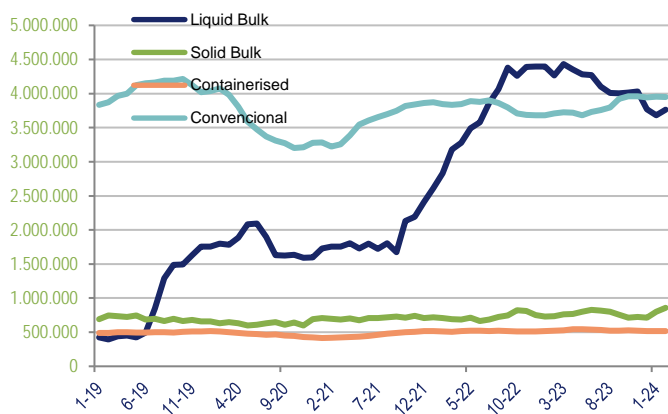
Monthly accumulative Total traffic (t)



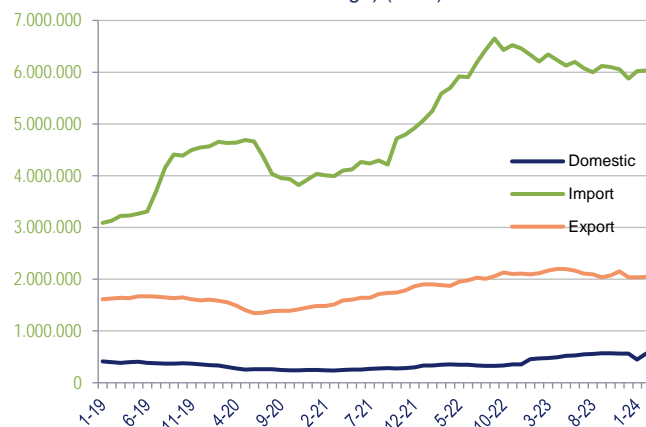
Monthly accumulative Container traffic (TEU)



Traffic evolution by type of packaging (t) (MAT)*



External/Domestic Trade (tonnes without tares general cargo) (MAT)*

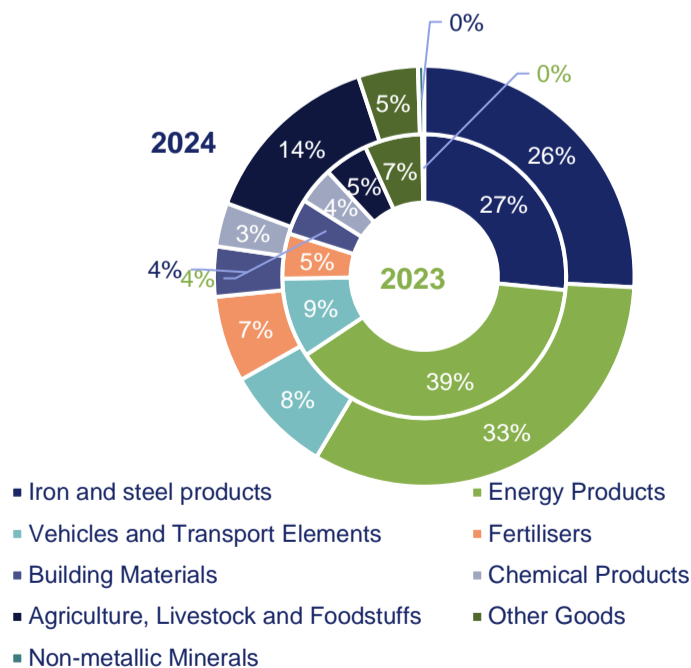


*MAT: Moving Annual Total

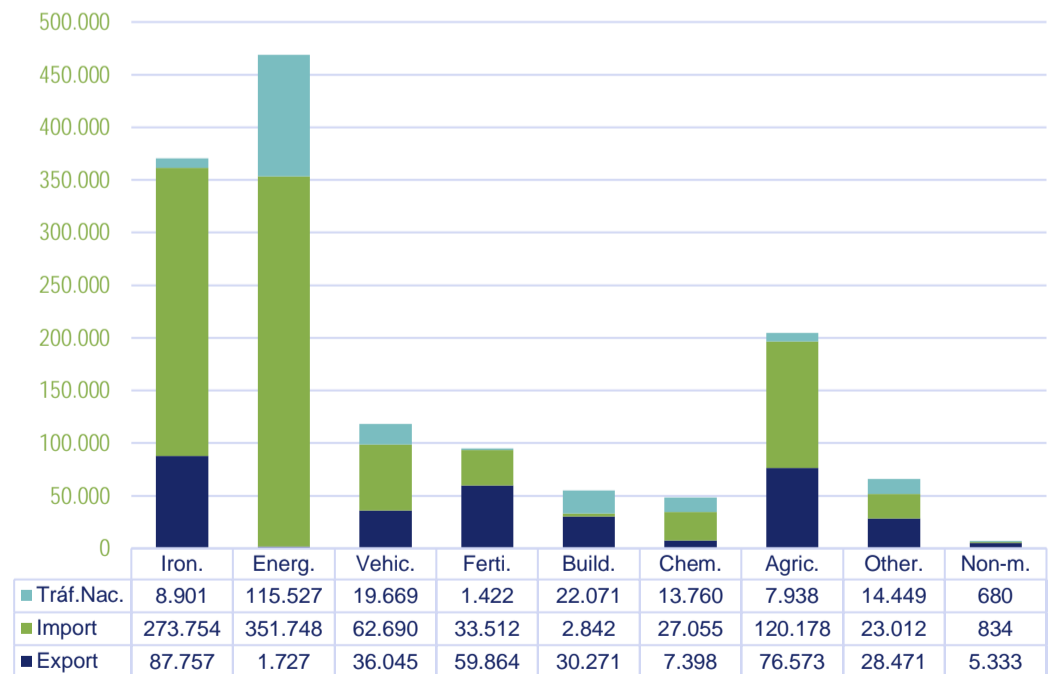
11.2.2 Classification of goods by types. Port of Sagunto

	2024					Δ24/23 Feb. accum				Δ24/23 Jan. accum
	2023	Export	Import	Domestic	TOTAL	Export	Import	Domestic	TOTAL	
1. Energy Products	501.059	1.727	351.748	115.527	469.002	-98,30%	27,28%	-6,11%	-6,40%	-29,02%
Crude oil	0	0	0	0	0					
Fueloil	178	0	24	0	24				-86,52%	500,00%
Gasoil	0	0	0	0	0					
Petrol	0	0	0	0	0					
Other oil products	12	0	0	0	0					
Energetic gases of oil	16	0	0	34	34			112,50%	112,50%	6,25%
Coal and petroleum coke	0	0	0	17	17					
Natural gas	499.015	1.634	351.724	113.989	467.347	-98,39%	27,28%	-5,83%	-6,35%	-29,03%
Biocombustibles	1.838	93	0	1.487	1.580	287,50%		-16,93%	-14,04%	-26,73%
10. Iron and steel products	340.572	87.757	273.754	8.901	370.412	18,11%	3,56%	360,24%	8,76%	14,85%
Iron ore	24	48	30	0	78		25,00%		225,00%	225,00%
Other minerals and metallic residues	1.066	0	52	837	889		-72,19%	-2,11%	-16,60%	-4,70%
Scrap iron	3.075	0	810	1.368	2.178		-64,49%	72,29%	-29,17%	-19,61%
Iron and steel products	332.412	84.661	272.248	6.626	363.535	20,15%	4,02%	2871,30%	9,36%	15,78%
Other metallurgical products	3.995	3.048	614	70	3.732	-20,06%	411,67%	12,90%	-6,58%	-36,95%
11. Non-metallic Minerals	2.851	5.333	834	680	6.847	1771,23%	170,78%	-69,88%	140,16%	-15,06%
Common salt	0	111	0	18	129					
Other not metallic minerals	2.851	5.222	834	662	6.718	1732,28%	170,78%	-70,68%	135,64%	-16,74%
4. Fertilisers	65.833	59.864	33.512	1.422	94.798	171,28%	-20,20%	-19,80%	44,00%	40,87%
Phosphates	0	0	0	0	0					
Potashes	0	0	0	82	82					
Natural and artificial fertilisers	65.833	59.864	33.512	1.340	94.716	171,28%	-20,20%	-24,42%	43,87%	40,76%
5. Chemical Products	53.746	7.398	27.055	13.760	48.213	30,20%	-38,63%	245,55%	-10,29%	-39,58%
Chemical products	53.746	7.398	27.055	13.760	48.213	30,20%	-38,63%	245,55%	-10,29%	-39,58%
6. Building Materials	52.422	30.271	2.842	22.071	55.184	-0,72%	-10,85%	17,76%	5,27%	13,71%
Asphalt	72	0	0	76	76			5,56%	5,56%	-41,67%
Cement and clinker	13.146	15.665	0	11.934	27.599	37,14%		592,63%	109,94%	121,48%
Elaborated materials of construction	39.204	14.606	2.842	10.061	27.509	-23,40%	-10,85%	-40,63%	-29,83%	-29,80%
7. Agriculture, Livestock and Foodstuffs	64.651	76.573	120.178	7.938	204.689	208,25%	266,88%	12,55%	216,61%	275,26%
Cereals and its flours	178	3.036	98.490	104	101.630	10020,00%		-29,73%	56995,51%	45821,68%
Beans of soybean	1	0	0	0	0					
Fruits, vegetables and pulses	4.282	674	0	1.649	2.323	-69,94%		-19,17%	-45,75%	-48,43%
Wines, drinks, alcohols and derivatives	18.994	49.846	7.756	3.368	60.970	423,37%	17,62%	17,11%	221,00%	526,59%
Canned food	910	335	0	178	513	-49,62%		-27,35%	-43,63%	-49,68%
Tobacco, cocoa, coffee and spices	48	169	0	87	256	1590,00%		128,95%	433,33%	695,24%
Oils and fats	29.341	17.050	10.033	51	27.134	204,25%	-57,39%	-73,30%	-7,52%	-28,49%
Other food products	9.061	4.503	2.650	1.850	9.003	-25,05%	30,03%	82,27%	-0,64%	-1,76%
Frozen and refreshed fish	1.236	918	1.150	126	2.194	29,30%	152,19%	80,00%	77,51%	10,61%
Fodder and forages	600	42	99	525	666	-12,50%	-19,51%	22,38%	11,00%	-0,32%
8. Other Goods	84.444	28.471	23.012	14.449	65.932	-15,27%	-6,08%	-45,15%	-21,92%	-21,93%
Wood and cork	6.407	2.316	1.950	94	4.360	-33,47%	-28,88%	-48,91%	-31,95%	-33,20%
Paper and wood pulp	15.360	6.799	2.097	4.725	13.621	-11,99%	-49,45%	35,50%	-11,32%	3,14%
Machinery, tools and supplies	31.728	3.870	5.282	2.666	11.818	-54,14%	-29,79%	-83,09%	-62,75%	-76,31%
Other goods	30.949	15.486	13.683	6.964	36.133	10,96%	35,64%	0,85%	16,75%	28,88%
9. Vehicles and Transport Elements	116.616	36.045	62.690	19.669	118.404	11,78%	11,95%	-30,67%	1,53%	6,40%
Vehicles and its pieces	41.726	8.527	41.769	3.992	54.288	-6,66%	39,08%	56,00%	30,11%	48,65%
Tara equipment (Ro-Ro)	55.775	24.170	18.338	4.031	46.539	25,68%	-14,73%	-73,19%	-16,56%	-17,77%
Tara of containers	19.115	3.348	2.583	11.646	17.577	-13,69%	-42,11%	8,09%	-8,05%	-15,84%
Total without transshipment	1.282.194	333.439	895.625	204.417	1.433.481	2,55%	20,46%	-4,26%	11,80%	2,72%
Transshipment	5.853	1.729	1.766	145	3.640	-28,85%	-48,07%	559,09%	-37,81%	-63,46%
TOTAL	1.288.047	335.168	897.391	204.562	1.437.121	2,31%	20,14%	-4,20%	11,57%	2,40%

Graphic by sectors 2023 vs 2024



Export/Import/Domestic 2024



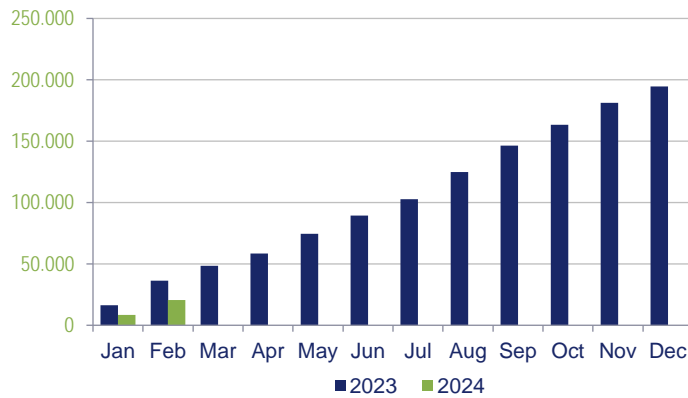
11.3 Port of Gandía

11.3.1 Main Figures

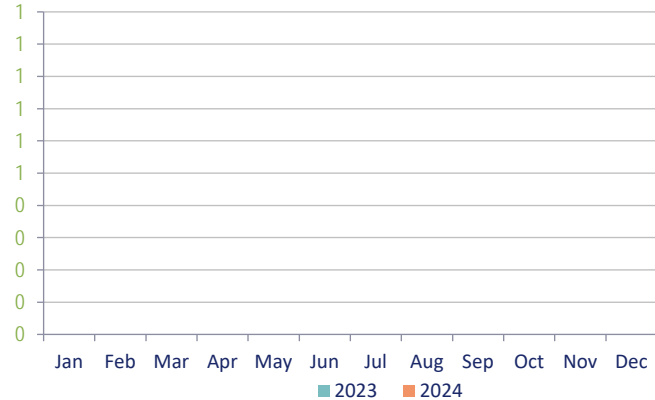


	2023	2024	Δ24/23 Feb. accum	Δ24/23 Jan. accum	Annual trend
Total traffic (t)	37.070	21.072	-43,15%	-47,02%	-27,77%
Liquid Bulk					-1,85%
Solid Bulk					-28,38%
Convencional General Cargo	36.394	20.459	-43,78%	-48,43%	
Containerised General Cargo					
Fishing	76	354	367,78%	797,10%	48,67%
Supplies	600	259	-56,83%	-25,71%	-35,48%
Traffic structure (t)	36.394	20.459	-43,78%	-48,43%	-27,94%
Loaded/Unloaded	36.394	20.459	-43,78%	-48,43%	-27,94%
Loaded	12.635				-6,32%
Unloaded	23.759	20.459	-13,89%	-40,78%	-36,54%
Transshipment					
Vessels Number	13	6	-53,85%	-57,14%	-34,57%
GT	79.229	70.427	-11,11%	-8,48%	-13,80%
Containers (TEU)	0	0			
Full					
Loaded					
Unloaded					
Transshipment					
Empty					
Passengers (units)	0	0			
Regular Lines	0	0			
Cruise					
Vehicles (units)	0	0			

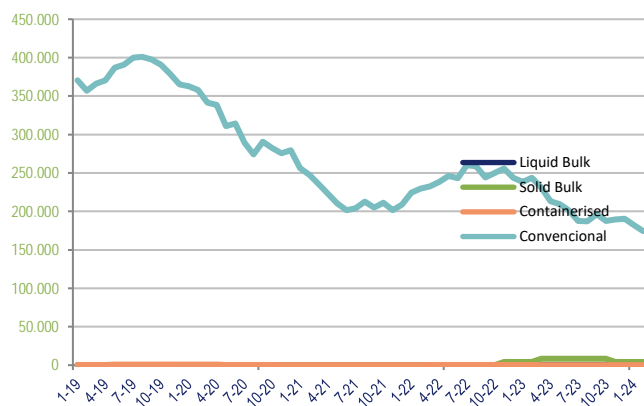
Monthly accumulative Total traffic (t)



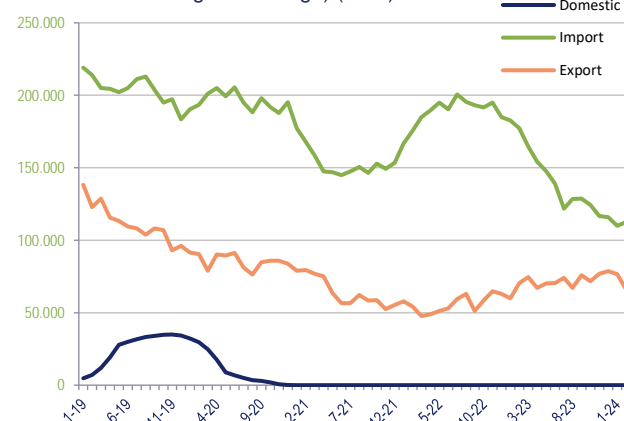
Monthly accumulative Container traffic (TEU)



Traffic evolution by type of packaging (t) (MAT)*



External/Domestic Trade (tonnes without tares general cargo) (MAT)*



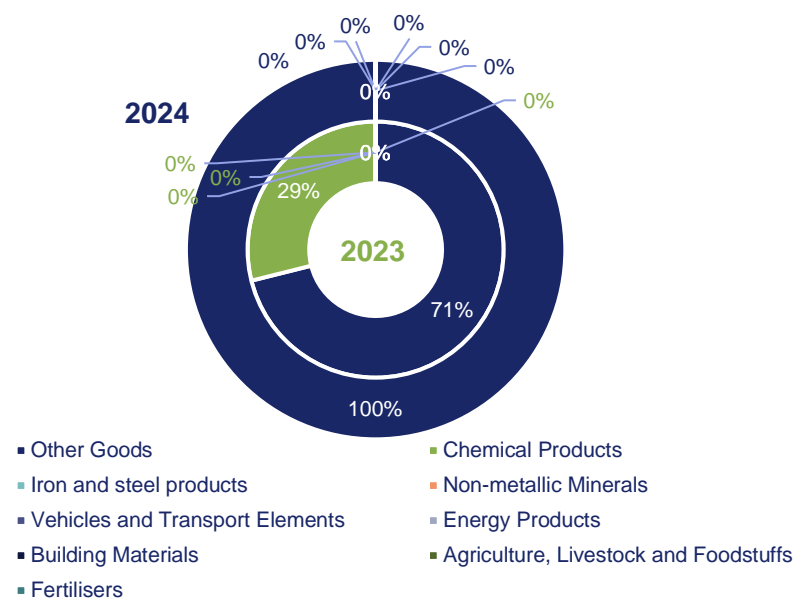
*MAT: Moving Annual Total

11.3.2 CLASIFICACIÓN DE LAS MERCANCÍAS SEGÚN SU NATURALEZA Y USO

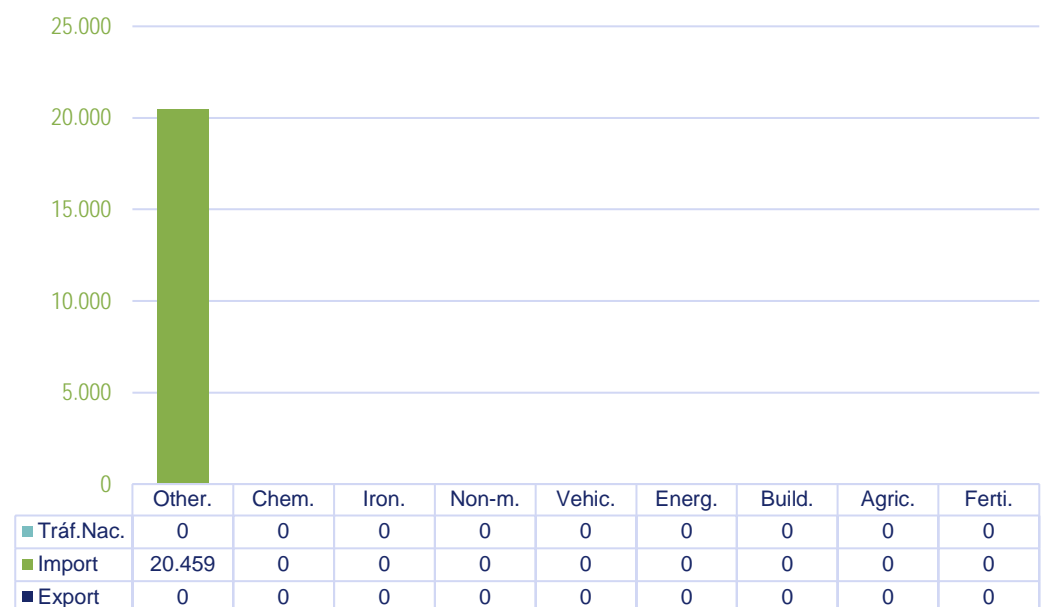


	2023	Export	2024			Δ24/23 Feb. accum				Δ24/23 Jan. accum
			Import	Domestic	TOTAL	Export	Import	Domestic	TOTAL	
1. Energy Products					0					
Crude oil	0	0	0	0	0					
Fueloil	0	0	0	0	0					
Gasoil	0	0	0	0	0					
Petrol	0	0	0	0	0					
Other oil products	0	0	0	0	0					
Energetic gases of oil	0	0	0	0	0					
Coal and petroleum coke	0	0	0	0	0					
Natural gas	0	0	0	0	0					
Biocombustibles	0	0	0	0	0					
10. Iron and steel products					0					
Iron ore	0	0	0	0	0					
Other minerals and metallic residues	0	0	0	0	0					
Scrap iron	0	0	0	0	0					
Iron and steel products	0	0	0	0	0					
Other metallurgical products	0	0	0	0	0					
11. Non-metallic Minerals					0					
Common salt	0	0	0	0	0					
Other not metallic minerals	0	0	0	0	0					
4. Fertilisers					0					
Phosphates	0	0	0	0	0					
Potashes	0	0	0	0	0					
Natural and artificial fertilisers	0	0	0	0	0					
5. Chemical Products	10.518				0					
Chemical products	10.518	0	0	0	0					
6. Building Materials					0					
Asphalt	0	0	0	0	0					
Cement and clinker	0	0	0	0	0					
Elaborated materials of construction	0	0	0	0	0					
7. Agriculture, Livestock and Foodstuffs					0					
Cereals and its flours	0	0	0	0	0					
Beans of soybean	0	0	0	0	0					
Fruits, vegetables and pulses	0	0	0	0	0					
Wines, drinks, alcohols and derivatives	0	0	0	0	0					
Canned food	0	0	0	0	0					
Tobacco, cocoa, coffee and spices	0	0	0	0	0					
Oils and fats	0	0	0	0	0					
Other food products	0	0	0	0	0					
Frozen and refreshed fish	0	0	0	0	0					
Fodder and forages	0	0	0	0	0					
8. Other Goods	25.876		20.459		20.459		-13,89%		-20,93%	-48,43%
Wood and cork	8.118	0	5.529	0	5.529		-10,17%		-31,89%	-88,87%
Paper and wood pulp	17.604	0	14.902	0	14.902		-15,35%		-15,35%	-15,05%
Machinery, tools and supplies	154	0	28	0	28				-81,82%	
Other goods	0	0	0	0	0					
9. Vehicles and Transport Elements	0		0		0					
Vehicles and its pieces	0	0	0	0	0					
Tara equipment (Ro-Ro)	0	0	0	0	0					
Tara of containers	0		0		0					
Total without transhipment	36.394		20.459	0	20.459		-13,89%		-43,78%	-48,43%
Transhipment	0	0	0	0	0					
TOTAL	36.394	#¡VALOR!	20.459	0	#¡VALOR!		-13,89%		-43,78%	-48,43%

Graphic by sectors 2023 vs 2024



Export/Import/Domestic 2024



Annex I: Transshipment traffic. Port Authority of Valencia

	2023	2024				Δ24/23 Feb. accum				Δ24/23 Jan. accum
		Export	Import	Domestic	TOTAL	Export	Import	Domestic	TOTAL	accum
1. Energy Products	148.019	58.351	61.052	6.432	125.835	-4,60%	-24,50%	7,40%	-14,99%	-19,41%
Crude oil	0	10	0	0	10					
Fueloil	14.182	13.804	14.170	1.951	29.925	98,02%	141,07%	46,36%	111,01%	128,88%
Gasoil	1.012	0	6.379	0	6.379		1083,49%		530,34%	1426,08%
Petrol	0	0	0	0	0					
Other oil products	107.349	33.121	31.133	109	64.363	-22,39%	-51,84%	336,00%	-40,04%	-59,04%
Energetic gases of oil	206	50	151	27	228	-51,46%	46,60%		10,68%	151,56%
Coal and petroleum coke	4.868	2.414	3.107	1.190	6.711	58,50%	27,81%	30,20%	37,86%	191,91%
Natural gas	0	0	0	0	0					
Biocombustibles	20.402	8.952	6.112	3.155	18.219	-4,98%	-15,86%	-15,12%	-10,70%	28,91%
10. Iron and steel products	387.097	208.748	212.289	16.254	437.291	12,92%	13,00%	13,18%	12,97%	22,81%
Iron ore	40	0	0	0	0					
Other minerals and metallic residues	56.763	12.796	9.687	2.309	24.792	-53,90%	-64,68%	45,77%	-56,32%	-53,03%
Scrap iron	38.239	24.249	24.807	405	49.461	40,44%	23,39%	-53,34%	29,35%	13,84%
Iron and steel products	199.728	106.486	113.161	9.003	228.650	11,79%	20,29%	-13,42%	14,48%	29,28%
Other metallurgical products	92.327	65.217	64.634	4.537	134.388	46,36%	39,72%	200,46%	45,56%	61,25%
11. Non-metallic Minerals	105.213	93.827	97.601	7.993	199.421	87,01%	92,60%	83,07%	89,54%	222,42%
Common salt	10.957	6.805	5.062	1.218	13.085	24,89%	20,12%	-5,87%	19,42%	79,07%
Other not metallic minerals	94.256	87.022	92.539	6.775	186.336	94,58%	99,18%	120,54%	97,69%	238,81%
4. Fertilisers	52.337	36.487	35.580	14.647	86.714	80,35%	53,59%	63,84%	65,68%	118,62%
Phosphates	0	0	0	0	0					
Potashes	6.589	5.471	8.871	2.144	16.486	65,99%	175,75%	2721,05%	150,20%	16,57%
Natural and artificial fertilisers	45.748	31.016	26.709	12.503	70.228	83,15%	33,89%	41,05%	53,51%	139,42%
5. Chemical Products	598.996	451.972	463.945	51.550	967.467	63,09%	62,93%	38,90%	61,51%	63,25%
Chemical products	598.996	451.972	463.945	51.550	967.467	63,09%	62,93%	38,90%	61,51%	63,25%
6. Building Materials	353.714	213.624	201.036	12.472	427.132	21,74%	19,56%	23,62%	20,76%	51,06%
Asphalt	7.060	1.117	1.221	0	2.338	-68,43%	-65,33%		-66,88%	1968,75%
Cement and clinker	36.549	15.932	17.128	936	33.996	-20,57%	10,33%	-3,11%	-6,99%	51,47%
Elaborated materials of construction	310.105	196.575	182.687	11.536	390.798	29,43%	22,53%	26,45%	26,02%	50,81%
7. Agriculture, Livestock and Foodstuffs	1.390.354	527.460	544.915	66.321	1.138.696	-18,20%	-17,67%	-20,72%	-18,10%	-11,33%
Cereals and its flours	109.762	43.462	47.524	560	91.546	-17,15%	-13,20%	-78,07%	-16,60%	-5,77%
Beans of soybean	35.472	5.544	5.632	0	11.176	-68,74%	-68,25%		-68,49%	-31,93%
Fruits, vegetables and pulses	183.958	108.667	139.681	28.298	276.646	30,81%	54,31%	173,09%	50,39%	54,39%
Wines, drinks, alcohols and derivatives	159.638	53.783	46.941	3.794	104.518	-32,14%	-38,62%	-2,77%	-34,53%	-44,33%
Canned food	77.668	45.478	43.129	5.958	94.565	25,27%	43,99%	-47,79%	21,76%	23,68%
Tobacco, cocoa, coffee and spices	200.038	51.104	53.232	4.140	108.476	-38,28%	-45,09%	-79,60%	-45,77%	-42,46%
Oils and fats	55.374	23.948	22.309	6.062	52.319	4,10%	7,72%	-48,01%	-5,52%	-20,20%
Other food products	437.051	159.459	148.247	14.857	322.563	-24,55%	-28,99%	-12,33%	-26,20%	-14,93%
Frozen and refreshed fish	48.847	9.358	12.496	974	22.828	-52,02%	-46,70%	-83,49%	-53,27%	-54,96%
Fodder and forages	82.546	26.657	25.724	1.678	54.059	-32,27%	-39,57%	170,65%	-34,51%	26,21%
8. Other Goods	1.152.317	652.291	651.423	43.488	1.347.202	18,70%	15,11%	17,94%	16,91%	36,43%
Wood and cork	93.611	72.361	69.036	1.392	142.789	76,80%	38,22%	-49,10%	52,53%	103,98%
Paper and wood pulp	266.261	140.878	121.599	6.869	269.346	14,60%	-8,15%	-37,24%	1,16%	24,02%
Machinery, tools and supplies	249.375	144.303	149.902	12.037	306.242	17,75%	25,49%	63,39%	22,80%	48,72%
Other goods	543.070	294.749	310.886	23.190	628.825	12,02%	17,70%	46,53%	15,79%	26,50%
9. Vehicles and Transport Elements	250.463	130.775	145.612	11.981	288.368	8,04%	22,91%	9,39%	15,13%	26,46%
Vehicles and its pieces	131.934	68.620	68.889	6.201	143.710	7,16%	12,15%	-4,20%	8,93%	26,52%
Tara equipment (Ro-Ro)	0	0	0	0	0					
Tara of containers	118.529	62.155	76.723	5.780	144.658	9,04%	34,49%	29,02%	22,04%	26,40%
TOTAL	4.438.510	2.373.535	2.413.453	231.138	5.018.126	13,87%	12,69%	8,86%	13,06%	26,77%

Annex II: Transshipment traffic. Port of Valencia

	2024				Δ24/23 Feb. acum				Δ24/23 Jan. acum	
	2023	Export	Import	Domestic	TOTAL	Export	Import	Domestic	TOTAL	
1. Energy Products	148.019	58.351	61.052	6.432	125.835	-4,60%	-24,50%	7,40%	-14,99%	-19,41%
Crude oil	0	10	0	0	10					
Fueloil	14.182	13.804	14.170	1.951	29.925	98,02%	141,07%	46,36%	111,01%	128,88%
Gasoil	1.012	0	6.379	0	6.379		1083,49%		530,34%	1426,08%
Petrol	0	0	0	0	0					
Other oil products	107.349	33.121	31.133	109	64.363	-22,39%	-51,84%	336,00%	-40,04%	-59,04%
Energetic gases of oil	206	50	151	27	228	-51,46%	46,60%		10,68%	151,56%
Coal and petroleum coke	4.868	2.414	3.107	1.190	6.711	58,50%	27,81%	30,20%	37,86%	191,91%
Natural gas	0	0	0	0	0					
Biocombustibles	20.402	8.952	6.112	3.155	18.219	-4,98%	-15,86%	-15,12%	-10,70%	28,91%
10. Iron and steel products	383.645	207.178	210.754	16.254	434.186	13,13%	13,22%	13,18%	13,17%	23,76%
Iron ore	40	0	0	0	0					
Other minerals and metallic residues	56.763	12.796	9.687	2.309	24.792	-53,90%	-64,68%	45,77%	-56,32%	-53,03%
Scrap iron	38.239	24.249	24.807	405	49.461	40,44%	23,39%	-53,34%	29,35%	13,84%
Iron and steel products	196.276	104.916	111.626	9.003	225.545	12,18%	20,87%	-13,42%	14,91%	31,46%
Other metallurgical products	92.327	65.217	64.634	4.537	134.388	46,36%	39,72%	200,46%	45,56%	61,25%
11. Non-metallic Minerals	105.213	93.827	97.601	7.993	199.421	87,01%	92,60%	83,07%	89,54%	222,42%
Common salt	10.957	6.805	5.062	1.218	13.085	24,89%	20,12%	-5,87%	19,42%	79,07%
Other not metallic minerals	94.256	87.022	92.539	6.775	186.336	94,58%	99,18%	120,54%	97,69%	238,81%
4. Fertilisers	52.337	36.487	35.580	14.647	86.714	80,35%	53,59%	63,84%	65,68%	118,62%
Phosphates	0	0	0	0	0					
Potashes	6.589	5.471	8.871	2.144	16.486	65,99%	175,75%	2721,05%	150,20%	16,57%
Natural and artificial fertilisers	45.748	31.016	26.709	12.503	70.228	83,15%	33,89%	41,05%	53,51%	139,42%
5. Chemical Products	598.996	451.972	463.945	51.550	967.467	63,09%	62,93%	38,90%	61,51%	63,25%
Chemical products	598.996	451.972	463.945	51.550	967.467	63,09%	62,93%	38,90%	61,51%	63,25%
6. Building Materials	353.714	213.624	201.036	12.472	427.132	21,74%	19,56%	23,62%	20,76%	51,06%
Asphalt	7.060	1.117	1.221	0	2.338	-68,43%	-65,33%		-66,88%	1968,75%
Cement and clinker	36.549	15.932	17.128	936	33.996	-20,57%	10,33%	-3,11%	-6,99%	51,47%
Elaborated materials of construction	310.105	196.575	182.687	11.536	390.798	29,43%	22,53%	26,45%	26,02%	50,81%
7. Agriculture, Livestock and Fo	1.390.354	527.460	544.915	66.321	1.138.696	-18,20%	-17,67%	-20,72%	-18,10%	-11,33%
Cereals and its flours	109.762	43.462	47.524	560	91.546	-17,15%	-13,20%	-78,07%	-16,60%	-5,77%
Beans of soybean	35.472	5.544	5.632	0	11.176	-68,74%	-68,25%		-68,49%	-31,93%
Fruits, vegetables and pulses	183.958	108.667	139.681	28.298	276.646	30,81%	54,31%	173,09%	50,39%	54,39%
Wines, drinks, alcohols and derivative	159.638	53.783	46.941	3.794	104.518	-32,14%	-38,62%	-2,77%	-34,53%	-44,33%
Canned food	77.668	45.478	43.129	5.958	94.565	25,27%	43,99%	-47,79%	21,76%	23,68%
Tobacco, cocoa, coffee and spices	200.038	51.104	53.232	4.140	108.476	-38,28%	-45,09%	-79,60%	-45,77%	-42,46%
Oils and fats	55.374	23.948	22.309	6.062	52.319	4,10%	7,72%	-48,01%	-5,52%	-20,20%
Other food products	437.051	159.459	148.247	14.857	322.563	-24,55%	-28,99%	-12,33%	-26,20%	-14,93%
Frozen and refreshed fish	48.847	9.358	12.496	974	22.828	-52,02%	-46,70%	-83,49%	-53,27%	-54,96%
Fodder and forages	82.546	26.657	25.724	1.678	54.059	-32,27%	-39,57%	170,65%	-34,51%	26,21%
8. Other Goods	1.152.172	652.282	651.374	43.488	1.347.144	18,72%	15,11%	17,94%	16,92%	36,47%
Wood and cork	93.611	72.361	69.036	1.392	142.789	76,80%	38,22%	-49,10%	52,53%	103,98%
Paper and wood pulp	266.261	140.878	121.599	6.869	269.346	14,60%	-8,15%	-37,24%	1,16%	24,02%
Machinery, tools and supplies	249.375	144.294	149.853	12.037	306.184	17,74%	25,45%	63,39%	22,78%	48,72%
Other goods	542.925	294.749	310.886	23.190	628.825	12,07%	17,72%	46,53%	15,82%	26,56%
9. Vehicles and Transport Elem	248.207	130.625	145.430	11.836	287.891	8,45%	24,48%	8,28%	15,99%	27,55%
Vehicles and its pieces	129.678	68.470	68.707	6.056	143.233	7,92%	14,93%	-6,12%	10,45%	28,62%
Tara equipment (Ro-Ro)	0	0	0	0	0					
Tara of containers	118.529	62.155	76.723	5.780	144.658	9,04%	34,49%	29,02%	22,04%	26,40%
TOTAL	4.432.657	2.371.806	2.411.687	230.993	5.014.486	13,92%	12,78%	8,80%	13,13%	26,93%

Annex III: Transshipment traffic. Port of Sagunto

	2023	Export	2024			TOTAL	Δ24/23 Feb. accum				Δ24/23 Jan. accum	
			Import	Domestic	TOTAL		Export	Import	Domestic	TOTAL		
1. Energy Products						0						
Crude oil	0	0	0	0	0	0						
Fueloil	0	0	0	0	0	0						
Gasoil	0	0	0	0	0	0						
Petrol	0	0	0	0	0	0						
Other oil products	0	0	0	0	0	0						
Energetic gases of oil	0	0	0	0	0	0						
Coal and petroleum coke	0	0	0	0	0	0						
Natural gas	0	0	0	0	0	0						
Biocombustibles	0	0	0	0	0	0						
10. Iron and steel products	3.452	1.570	1.535		3.105		-9,04%	-11,07%		-10,05%		-46,56%
Iron ore	0	0	0	0	0	0						
Other minerals and metallic residues	0	0	0	0	0	0						
Scrap iron	0	0	0	0	0	0						
Iron and steel products	3.452	1.570	1.535	0	3.105		-9,04%	-11,07%		-10,05%		-46,56%
Other metallurgical products	0	0	0	0	0	0						
11. Non-metallic Minerals						0						
Common salt	0	0	0	0	0	0						
Other not metallic minerals	0	0	0	0	0	0						
4. Fertilisers						0						
Phosphates	0	0	0	0	0	0						
Potashes	0	0	0	0	0	0						
Natural and artificial fertilisers	0	0	0	0	0	0						
5. Chemical Products						0						
Chemical products	0	0	0	0	0	0						
6. Building Materials						0						
Asphalt	0	0	0	0	0	0						
Cement and clinker	0	0	0	0	0	0						
Elaborated materials of construction	0	0	0	0	0	0						
7. Agriculture, Livestock and Foodstuffs						0						
Cereals and its flours	0	0	0	0	0	0						
Beans of soybean	0	0	0	0	0	0						
Fruits, vegetables and pulses	0	0	0	0	0	0						
Wines, drinks, alcohols and derivatives	0	0	0	0	0	0						
Canned food	0	0	0	0	0	0						
Tobacco, cocoa, coffee and spices	0	0	0	0	0	0						
Oils and fats	0	0	0	0	0	0						
Other food products	0	0	0	0	0	0						
Frozen and refreshed fish	0	0	0	0	0	0						
Fodder and forages	0	0	0	0	0	0						
8. Other Goods	145	9	49		58		-91,89%	44,12%		-60,00%		
Wood and cork	0	0	0	0	0	0						
Paper and wood pulp	0	0	0	0	0	0						
Machinery, tools and supplies	0	9	49	0	58							
Other goods	145	0	0	0	0	0						
9. Vehicles and Transport Elements	2.256	150	182	145	477		-74,70%	-88,91%	559,09%	-78,86%		
Vehicles and its pieces	2.256	150	182	145	477		-74,70%	-88,91%	559,09%	-78,86%		
Tara equipment (Ro-Ro)	0	0	0	0	0	0						
Tara of containers	0	0	0	0	0	0						
TOTAL	5.853	1.729	1.766	145	3.640		-28,85%	-48,07%	559,09%	-37,81%		-63,46%

Annex IV: Transshipment traffic. Port of Gandía

	2023	Export	2024		TOTAL	Δ24/23 Feb. accum			Δ24/23 Jan. accum
			Import	Domestic		Export	Import	Domestic	
1. Energy Products					0				
Crude oil	0	0	0	0	0				
Fueloil	0	0	0	0	0				
Gasoil	0	0	0	0	0				
Petrol	0	0	0	0	0				
Other oil products	0	0	0	0	0				
Energetic gases of oil	0	0	0	0	0				
Coal and petroleum coke	0	0	0	0	0				
Natural gas	0	0	0	0	0				
Biocombustibles	0	0	0	0	0				
10. Iron and steel products					0				
Iron ore	0	0	0	0	0				
Other minerals and metallic residues	0	0	0	0	0				
Scrap iron	0	0	0	0	0				
Iron and steel products	0	0	0	0	0				
Other metallurgical products	0	0	0	0	0				
11. Non-metallic Minerals					0				
Common salt	0	0	0	0	0				
Other not metallic minerals	0	0	0	0	0				
4. Fertilisers					0				
Phosphates	0	0	0	0	0				
Potashes	0	0	0	0	0				
Natural and artificial fertilisers	0	0	0	0	0				
5. Chemical Products					0				
Chemical products	0	0	0	0	0				
6. Building Materials					0				
Asphalt	0	0	0	0	0				
Cement and clinker	0	0	0	0	0				
Elaborated materials of construction	0	0	0	0	0				
7. Agriculture, Livestock and Fo					0				
Cereals and its flours	0	0	0	0	0				
Beans of soybean	0	0	0	0	0				
Fruits, vegetables and pulses	0	0	0	0	0				
Wines, drinks, alcohols and derivative	0	0	0	0	0				
Canned food	0	0	0	0	0				
Tobacco, cocoa, coffee and spices	0	0	0	0	0				
Oils and fats	0	0	0	0	0				
Other food products	0	0	0	0	0				
Frozen and refreshed fish	0	0	0	0	0				
Fodder and forages	0	0	0	0	0				
8. Other Goods					0				
Wood and cork	0	0	0	0	0				
Paper and wood pulp	0	0	0	0	0				
Machinery, tools and supplies	0	0	0	0	0				
Other goods	0	0	0	0	0				
9. Vehicles and Transport Elem					0				
Vehicles and its pieces	0	0	0	0	0				
Tara equipment (Ro-Ro)	0	0	0	0	0				
Tara of containers	0	0	0	0	0				
TOTAL					0				