

# PORT OF VALENCIA

## BASIC EMERGENCY GUIDELINES FOR VISITORS TO THE PORT

Welcome to the port. Please, read this document. It explains what to do in case of an emergency in the Port of Valencia. Record on your mobile phone the Emergency Control Centre 's phone numbers.

In case of an emergency in the Port of Valencia, please contact the Emergency Control Centre of the Valencia Port Authority (E.C.C.) without delay .

Describe the incident (traffic accident, accident at work, fire, explosion, spill, marine pollution, whether there are casualties, ambulance requirements, etc.).

Give details of the exact location of the emergency, and provide –where possible– any other information requested by the E.C.C. **(1)**.

Please remain calm when providing information. This will allow a prompt and efficient response to the emergency.

Thank you for your collaboration.

.....

**(1):** When did it happen?; How many people are in danger?; Does it involve a container? Do you know its number?; Does it involve dangerous goods? Do you know its IMO class or UN number?; What do you need exactly: ambulance, firefighters?; Caller's contact data; etc.



Please report any emergency to the

### EMERGENCY CONTROL CENTER (ECC)

of the Valencia Port Authority  
Operational 24/7

☎ **+34 900 85 95 73**

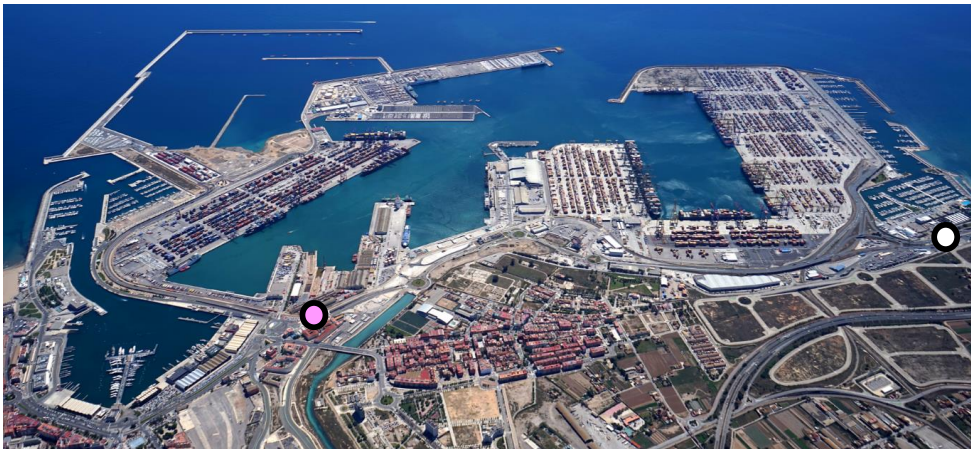
☎ **+34 96 393 95 73**

E-mail: [centrodecontrol@valenciaport.com](mailto:centrodecontrol@valenciaport.com)  
Fax: +34 96 367 86 65

### INSTRUCTIONS FOR EMERGENCIES

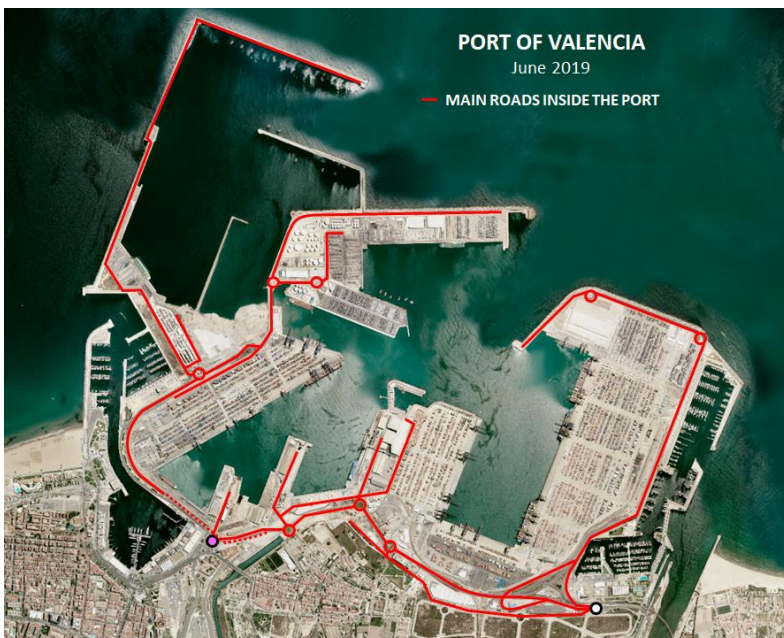
In case of an emergency during your visit to the port, please follow these basic instructions:

- Follow all instructions from Port Police or Security Personnel at the terminal / company / ship involved.
- If the area has to be evacuated, please leave immediately in a calm and orderly manner. Go to the muster point if instructed to do so.

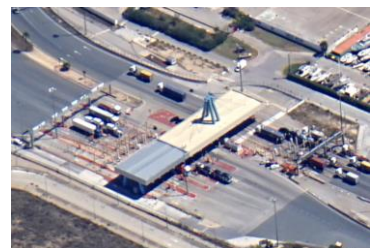


### IF YOU ARE DRIVING A VEHICLE INSIDE THE PORT AT THE TIME OF AN EMERGENCY:

- Do not exceed the speed limits at any time and respect all traffic signals. Be extra vigilant.
- Give way to emergency vehicles.
- Never stop or park your vehicle at crossroads or roundabouts.
- If you must park your vehicle, do so at a safe distance and location outside the emergency area and remain by your vehicle until the emergency is over.



○ SOUTH ACCESS:  
Entry and exit point for transport vehicles and cars.



● NAZARET ACCESS:  
Entry and exit point for cars.

