

PORT OF VALENCIA

BASIC EMERGENCY GUIDELINES FOR DRIVERS OF HEAVY GOODS VEHICLES

Welcome to the port. Please, take this document with you. It explains what to do in case of an emergency in the Port of Valencia.

IF THE EMERGENCY OCCURS IN ONE OF THE PORT TERMINALS

Inform Security Personnel at the terminal or company concerned without delay to allow Internal Emergency Plans to be activated.

If you cannot reach security staff please follow the instructions below.

IF THE EMERGENCY IS ON THE INTERNAL ROAD NETWORK OF THE PORT

Please contact the Emergency Control Centre (E.C.C.) of the Valencia Port Authority without delay.

Describe the incident (traffic accident, accident at work, fire, explosion, spill, marine pollution, whether there are casualties, ambulance requirements, etc.).

Give details of the exact location of the emergency, and provide –where possible– any other information requested by the E.C.C (1).

Please remain calm when providing information. This will allow a prompt and efficient response to the emergency. Thank you for your collaboration.

(1): When did it happen?; How many people are in danger?; Does it involve a container? Do you know its number?; Does it involve dangerous goods? Do you know its IMO class or UN number?; What do you need exactly: ambulance, firefighters?; Caller's contact data; etc.

VEHICLES TRANSPORTING DANGEROUS GOODS

IF YOU ARE TRANSPORTING DANGEROUS GOODS TO OR FROM THE PORT,
PLEASE REMEMBER::

- Make sure you are in possession of the necessary goods permits issued by the Port Authority and follow the instructions provided.
- Enter and/or exit the port via the South Access.
- Do not stop on the internal road network of the port or park between the South Access and the terminal or vice versa.
- If you have difficulty accessing any of the terminals or companies, please inform the consignee of the goods, the Port Police or the E.C.C.
- Do not park or abandon your vehicle and/or the goods outside the terminal under any circumstances.



Please report any emergency to the
EMERGENCY CONTROL CENTER (ECC)
of the Valencia Port Authority
Operational 24/7

 **+34 900 85 95 73**

 **+34 96 393 95 73**

E-mail: centrodecontrol@valenciaport.com

Fax: +34 96 367 86 65

INSTRUCTIONS FOR EMERGENCIES

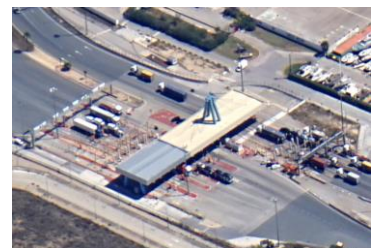
If an emergency occurs which does NOT involve your own vehicle, please follow these basic instructions:


- Follow all instructions from Port Police or Security Personnel at the terminal or company concerned.
- Do not exceed the speed limits at any time and respect all traffic signals. Be extra vigilant.
- Give way to emergency vehicles.
- Never stop or park your vehicle at crossroads or roundabouts.
- Park at an appropriate place, switch off the engine and remain by your vehicle until the emergency is over.
- If the emergency area has to be evacuated, please leave immediately in a calm and orderly manner. Go to the muster point if instructed to do so.
- If you have to get out of your vehicle, please wear your fluorescent safety vest at all times.
- If you are transporting dangerous goods do not approach the emergency area.

If your vehicle is the cause of the emergency, advise the E.C.C. without delay, and if possible switch off the engine and put out your warning signals to alert others.



 **SOUTH ACCESS:**
Entry and exit point
for transport vehicles
and cars.



 **NAZARET ACCESS:**
Entry and exit point
for cars.

