

PORT OF SAGUNTO

BASIC EMERGENCY GUIDELINES FOR MASTERS OF SHIPS AND RECREATIONAL CRAFT

Welcome to the Port. Please keep a copy of this document so you will know what to do in case of an emergency on board while navigating, anchoring or berthing in the Port of Sagunto.

In case of an emergency, please contact the Emergency Control Centre (E.C.C.) of the Valencia Port Authority without delay.

Describe the incident (accident, fire, explosion, spill, marine pollution, whether there are casualties, ambulance requirements, etc.).

Give details of the exact location of the emergency, and provide – where possible – any other information requested by the E.C.C. (1).

Please remain calm when providing information. This will allow a prompt and efficient response to the emergency.

Thank you for your collaboration.



Please report any emergency to the
**EMERGENCY CONTROL
CENTRE (E.C.C.)**

of the Valencia Port Authority

Operational 24/7

E.C.C. is permanently tuned to VHF Channel 16



VHF CHANNEL 16



+34 900 85 95 73



+34 96 393 95 73

E-mail: centrodecontrol@valenciaport.com

Fax: +34 96 367 86 65



PORT OF SAGUNTO
May 2018



STAND BY ON VHF CHANNEL 16

All ships berthed, anchored or sailing in waters of the port of Sagunto must stay tuned to Channel 16 VHF, to receive any notices related to ships and port safety or security.



WEATHER INFORMATION

According to IMO regulations on the matter, marine forecast from the Spanish National Meteorological Agency (AEMET) is broadcasted in Spanish and English every two hours (GMT +15', at odd hours) by the SAR Centre at Valencia, through VHF Channel 10. Notice of the broadcast on Channel 16.

These forecasts and warnings can be consulted in more detail at any time at the following address:
www.aemet.es



ADVERSE WEATHER CONDITIONS

If the current meteorological conditions are adverse at port area or wind gusts are detected in equal to or greater than 28 knots (52 km/h; 14.44 m/s):

- All ships anchored must maintain engines operational and crew ready to go under way if necessary.
- All ships berthed must check their lines and secure them if needed, maintaining engines operational and crew ready for reacting if necessary.

(1) INFORMATION WHICH SHOULD BE PROVIDED TO THE E.C.C.

If you alert the E.C.C to an emergency please try to provide the following information:

- 1 Who is calling? Name of the ship and details of the emergency? Is the ship berthed or anchored? Where?
- 2 What has happened? Accident, fire, explosion, leak, oil spill, etc?
- 3 Where is the accident? On board your own ship? On board another ship? (give the name) Is it in a terminal or quay where the ship is berthed? If so, which one?
- 4 Are there any casualties? How many? Is anybody trapped? How many people?
- 5 Do you know what type of substance or product is involved? If the emergency involves a container, do you know its number? Does it have IMO labels and if so, is there any number on the label?
- 6 If dangerous goods are involved, do you know the UN number or the IMO class?
- 7 When did the emergency start? Can the danger spread to any other ship? What is the name of this ship? Can it spread to the terminal? Which one?
- 8 What is required exactly? Ambulances? Fire Brigade? Tugs? Breathing apparatus (SCBA)? Measures for tackling marine pollution? Other?
- 9 If you have contacted the E.C.C. on Channel 16 VHF, please stand by. If contact was made by phone, please give your phone number or other contact details.

COMPULSARY RULES TO BE OBSERVED BY SHIPS

Please remember that during your ship's stay in the Port of Sagunto:

- 1 Any type of pollution to the sea, land or air is strictly forbidden. The port provides MARPOL collection services. Inform the E.C.C. of any type of pollution caused by your ship or any nearby ship.
- 2 Exercise extreme caution during bunkering procedures or the transfer of fuel between storage tanks. Make sure all the ship's equipment for combating fire and pollution are at the ready.
- 3 Do not carry out any 'hot work', repairs which would incapacitate either the propulsion or navigation systems, or air/sand/water blasting or paint the hull without prior permission from the Harbour Master and the Port Authority.
- 4 If the ship is transporting, loading or unloading dangerous goods:
 - Fulfil all current legal requirements both nationally (R.D. 145/1989 and R.D. 210/2004) and internationally (IMO Conventions and Codes: IMDG, IGC, IBC, IMSBC, etc.).
 - Advise the E.C.C. of any incident involving dangerous goods.
- 5 Always stay tuned to Channel 16 VHF.

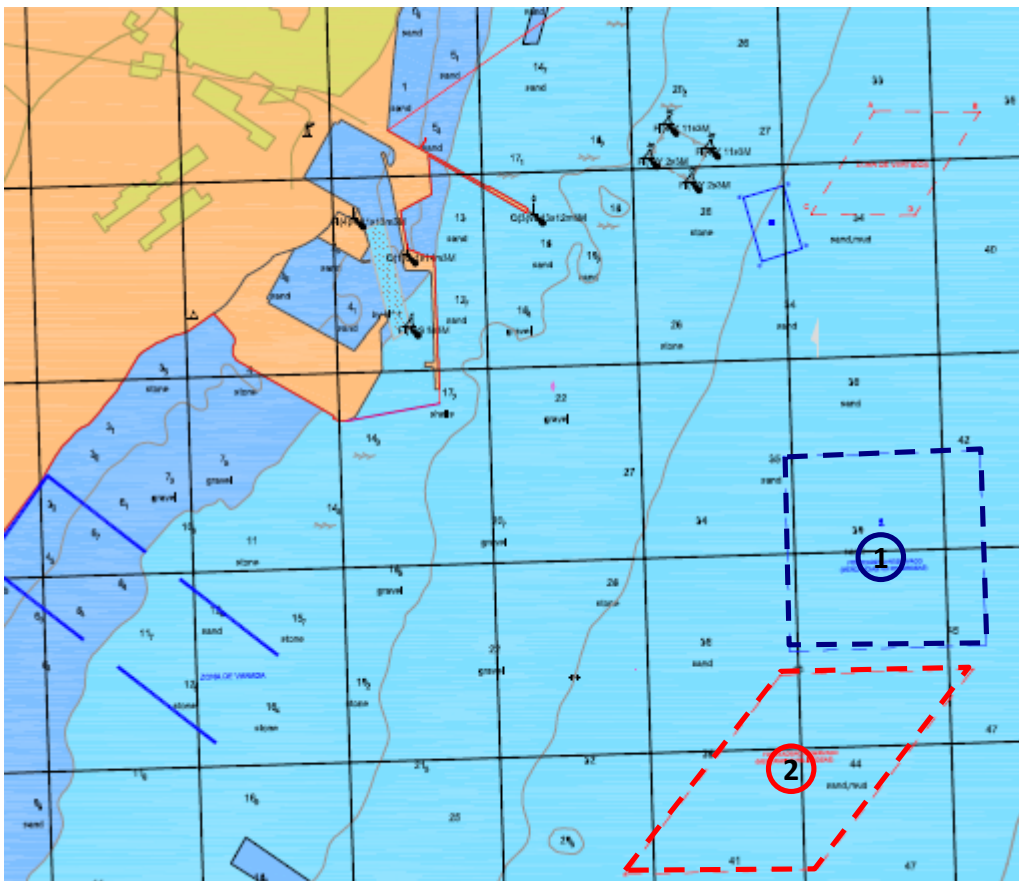


IN CASE OF ANY TYPE OF EMERGENCY

First of all, inform the E.C.C.

Inform the terminal at the same time - especially if the emergency is on board and the ship's manifold is connected for the loading or unloading of dangerous liquid bulk products.

If the accident represents a risk to your own ship, please prepare to leave the berth but do not manoeuvre the ship until approval has been obtained from the Emergency Director via the E.C.C., and Port Pilot is on board.



MAP OF ANCHORING AREAS

If you have to make use of information on this map, make sure that it is up to date at the time of use.

1 NON DANGEROUS GOODS

2 DANGEROUS GOODS

ACTIVATION OF ALARM IN CASE OF ACCIDENT IN FACILITIES OF THE COMPANIES FERTIBERIA AND SAGGAS

In the Port of Sagunto there are two companies which store or manipulate products that would give place to serious accidents.

- FERTIBERIA, S.A. (anhydrous ammonia)
- PLANTA REGASIFICADORA DE SAGUNTO (SAGGAS) (liquefied natural gas LNG)

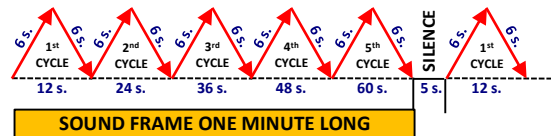
If a serious accident was happening in FERTIBERIA (ammonia gas) or in SAGGAS (LNG), an alarm siren would be heard. In that case, population near the involved facility must adopt some of the following measures to protect themselves:

- To **stay indoors** in the nearest building or safe shelter. Windows, doors and air inlets must be closed, sealing them as far as possible. Breathe through wet cloths.
- To **evacuate** the zone.

If your ship is berthed inside some area shown on the map, when the alarm siren is heard, consult the C.E.E. about the self-protection measure that must be adopted by the crew.

ALARM SOUND FOR STAYING INDOORS:

Frames of 1 minute long formed by 5 cycles of 12 seconds. For each cycle the sound rises during the first 6 seconds and descends the remaining 6 seconds. Each frame will be separated from the previous by a silent interval of 5 seconds.



ALARM SOUND FOR EVACUATION:

Frames of 1 minute long formed by 30 cycles of 2 seconds. For each cycle the sound rises during the first second and remains constant in an acute frequency during the other second. Each frame will be separated from the previous by a silent interval of 5 seconds.

